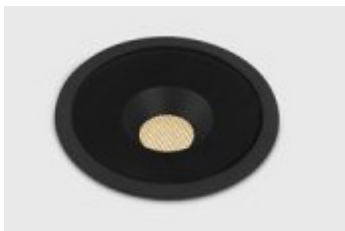
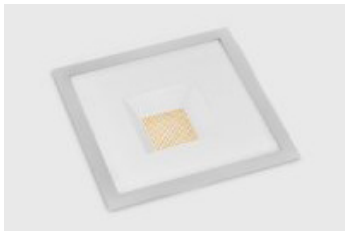


kreon up 80 (gen2)



Up adds dynamic elements to your architecture: walls become sculptures and pieces of art show their mysticism. As the name implies, Up directs its light mainly upwards, depending on the light source and on the use of reflectors.

Up 80 and Up 80 Circular are part of a range of in-ground luminaries for interior and exterior use. The luminaries are built with high quality materials and product techniques to guarantee their IP67 protection rate. The combination of the protection rate and the limited build-in depth, by use of LED, offer architects great flexibility for their projects.

The Up 80 product family is also Impact Protection (IK) rated as IK10, the highest protection rating in the category for walk-over rated products.

Construction

Luminaire

Made partially from hard anodised aluminum and BPT-plastic injection, PVD coated.

Matchbox

Made from galvanized sheet steel.

Finishes

- White (RAL 9016)
- Black (RAL 9004)

Mounting Options

In-grade mounting with or without matchbox.

Classifications

- Ingress Protection – IP67
 - * Water and Dust tight
 - * Protected against powerful water jets and temporary immersion
- Impact Protection – IK10
 - * Highest impact rating
 - * 20 joules impact

Electrical Characteristics

LED Specification

Cree LED.

LED Life

L80 greater than 50,000 hours.

Correlated Color Temperature (CCT)

- Available in 2700K, 3000k, or 4000k.
- CRI 90+

Gear

Standard universal voltage (120-277V) driver with on/off function (no dimming). Optional 0-10V dimming (120/277VAC).

Additional Notifications

- the fixture is IP67 rated thus, uses IP67 connectors only
- water should be able to flow of the product once installed
- when installed in solid ground (with or without matchbox) additional drainage must be provided (for example: a bed of gravel)
- make sure the coating (of the housing or other parts) is not damaged during installation or maintenance work: the damage can result in corrosion after contact with water
- please note that IP67 product can only be subjected to powerful water jets of 100L/min at a 100kN/m² force for 3 minutes and with the hose at minimum 3m distance when cleaned
- the fixture should not be placed in road lanes
- in order for the product to take pressure load, a proper foundation for the fixture should be provided by the client
- it is recommended to use the fixture in ground with a pH value between 5 and 8
- client should under no circumstances open the fixture themselves, in case of a problem, the fixture needs to be sent back to Kreon



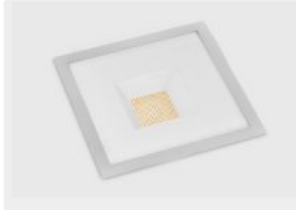
kreon up 80 (gen2)

Date: _____ Customer: _____

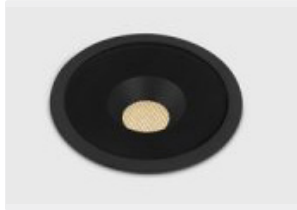
Project: _____

Type: _____ Qty: _____

up 80



up 80 circular



KU-_____- 80-_____-_____-_____-_____- 90 -_____-_____-

kreon up 80 (generation 2)	aperture size	light direction	louver / trim finish	CCT	CRI	dimming ¹	options
UPSQ – Square recessed aperture with flange for floors and walls UPSIL (In-Line)³ – Square recessed trimless/flangeless installation for floors and walls UPCI – Circular recessed aperture with flange for floors and walls UPCIL (In-Line)³ – Circular recessed trimless/flangeless installation for floors and walls	80 mm (3.25" In-Line, 3.75" including flange)	SP – Spot (21° beam) 361 source lumens pre- installed antiglare louver FL – Flood (29° beam) 341 source lumens pre- installed antiglare louver WFL – Wide Flood (38° beam) 293 source lumens pre- installed antiglare louver DF –Diffused (87° beam) 111 source lumens WW ⁴ – Up lighting asymmetric (10° x 64° wall wash) 263 source lumens	WH White BLK Black	27 2700K 30³ 3000k	90 – 90+ min CRI	D1 triac phase dimming (10%) 120V only D2 0-10V dimming (10%) 120-277V D2-LD 0-10V dimming (1%) 120-277V D3-2W Lutron HiLume dim 2 wire phase dimming (1%) 120V D3-3W² Lutron HiLume dim 3 wire dimming (1%) 120V D3-ECO Lutron SoftOn/Fade to Black EcoSystem dimming (1%) 120/277V D4 EldoLED dim to dark 0-10V (0%) 120-277V DALI Dali Dimming ONF on-off standard	00 – No matchbox ND³ – Matchbox RT – Removal tool (suction for glass) XC – Removal tool Wall or ceiling installation (for UPSQ and UPCI versions only)

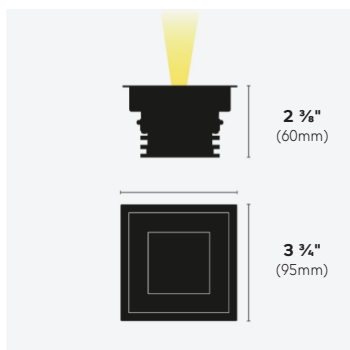
Ordering Example: KUUPCI-80-WW-WH-30-80-D1-ND

* Light Direction, CCT, and Optional Accessories will all impact light output. Please see IES files for delivered lumens.

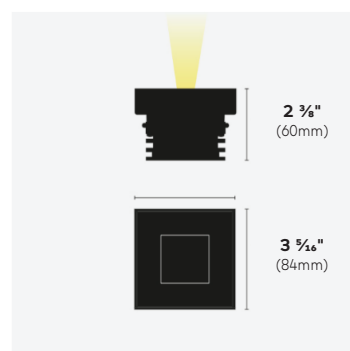
** Consult factory for custom RAL finish color options.

¹ Drivers must be in a remote location - See page 3 for box dimensions. ² Minimum of 2 fixtures per driver. ³ Matchbox is required for all In-Line versions. The use of the matchbox is suggested for all installations in soil/gravel and concrete. Ensure proper drainage below fixture is provided (with or without matchbox installation). See installation manual for details. Multiple fixtures can be controlled by single remote driver. Consult factory for details. ⁴ Recommended wall wash spacing of 2'-5 1/2"(750mm) from wall and between each fixture.

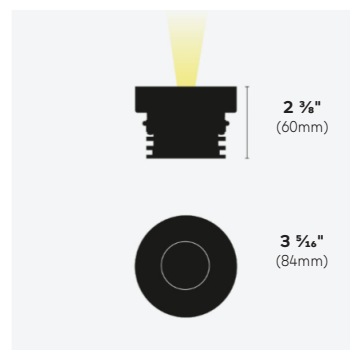
kreon up 80 (gen2)



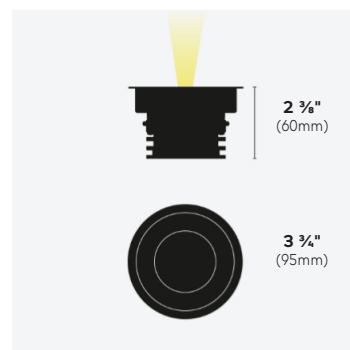
up 80 with flange



up 80 in-line



up 80 in-line circular



up 80 circular with flange

Description

Up adds dynamic elements to your architecture: walls become sculptures and pieces of art show their mysticism. As the name implies, Up directs its light mainly upwards, depending on the light source and on the use of reflectors.

Up 80 and Up 80 Circular are part of a range of luminaires for interior and exterior use. the in-line (trimless) version benefits from a stainless steel trim that provides a seamless juncture to minimize integration. The luminaires are built with high quality materials and product techniques to guarantee their IP67 protection rating, even in harsh salt water environments. The combination of the protection rate and the limited build-in depth, by use of LED, offer architects great flexibility for their projects.

The Up 80 product family is also Impact Protection (IK) rated as IK10, the highest protection rating in the category for walk-over rated products.

Mounting

recessed luminaire for floors and walls. Trim or trimless, round or square. Optional matchbox available..

Finish

white or black powder coated finish

Optical system / LED's

LED modules are deep-set within the luminaires and are controlled by a choice of anti-glare louvers for precise uplighting, brightness limiting diffusers for ambient or orientation lighting and wall wash optics for vertical illuminance. Cree LED. L80 greater than 50,000 hours. - New gen 2 wallwash system includes optic by Bartenbach Lichtlabor with excellent uniformity.

Color temperatures / CRI

CCT 2700K, 3000K; CRI90+

Controls / Dimming

Standard universal voltage (120-277V) driver with on/off function (no dimming). Optional 0-10V dimming (120/277VAC). Phase (120VAC), or digital control

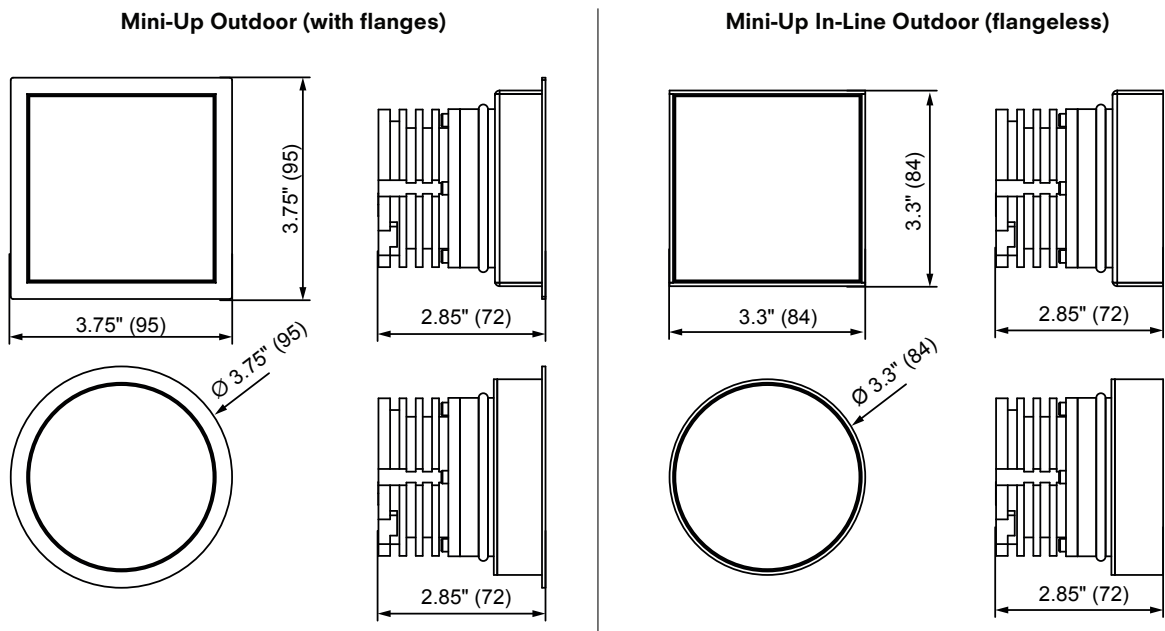
ETL / UL

Testing pending by ETL for installation in the US and Canada. IP67 rated. IK10 rated.



kreon up 80 (gen2)

Mounting

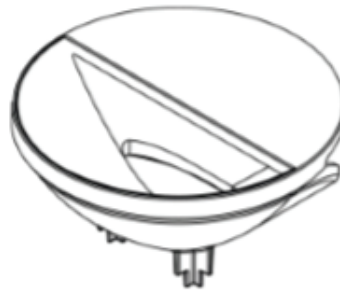
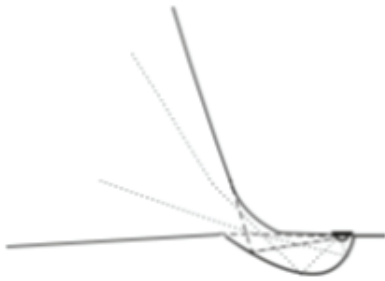
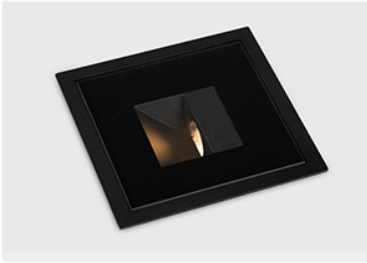


remote driver

Control Selection	Driver	IC Box Dimensions
SW	On-Off	7"x2.375"x1.5" (LxWxH)
D1	Triac Phase Dimming (10%)	7"x2.375"x1.5" (LxWxH)
D2	0-10V Dimming (10%)	16.5"x2.48"x1.97" (LxWxH)
D2-LD	0-10V Dimming (1%)	16.5"x2.48"x1.97" (LxWxH)
D3-2	Lutron 2-Wire Dimming (1%)	19"x2.48"x1.97" (LxWxH)
D3-3	Lutron 3-Wire Dimming (1%)	19"x2.48"x1.97" (LxWxH)
D4	EldoLED dim to dark (0%)	16.5"x2.48"x1.97" (LxWxH)

kreon up 80 (gen2)

gen 2 wallwash optics



efficiency up to 80%

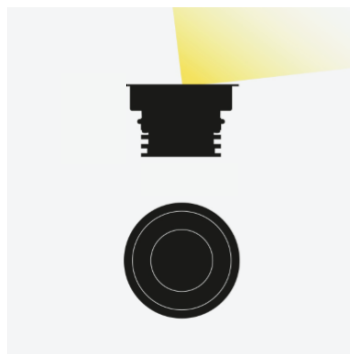
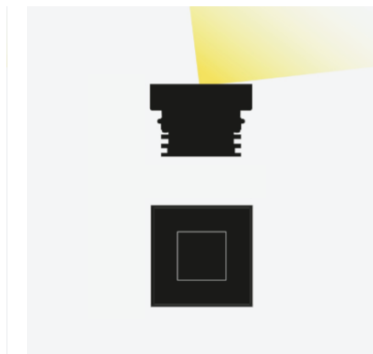
excellent uniformity

special louvre

asymmetric light distribution

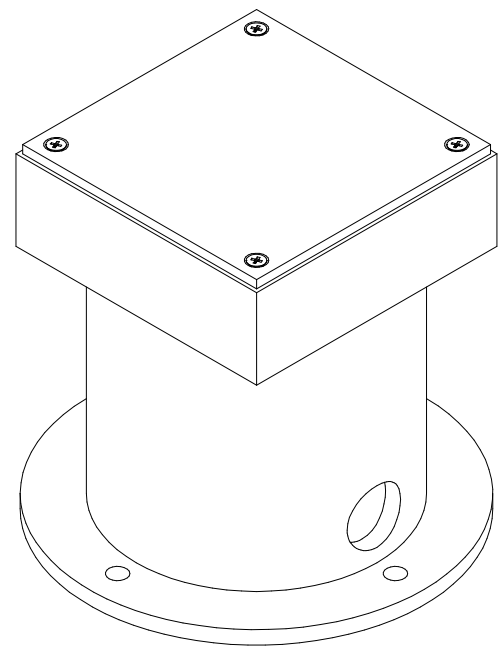
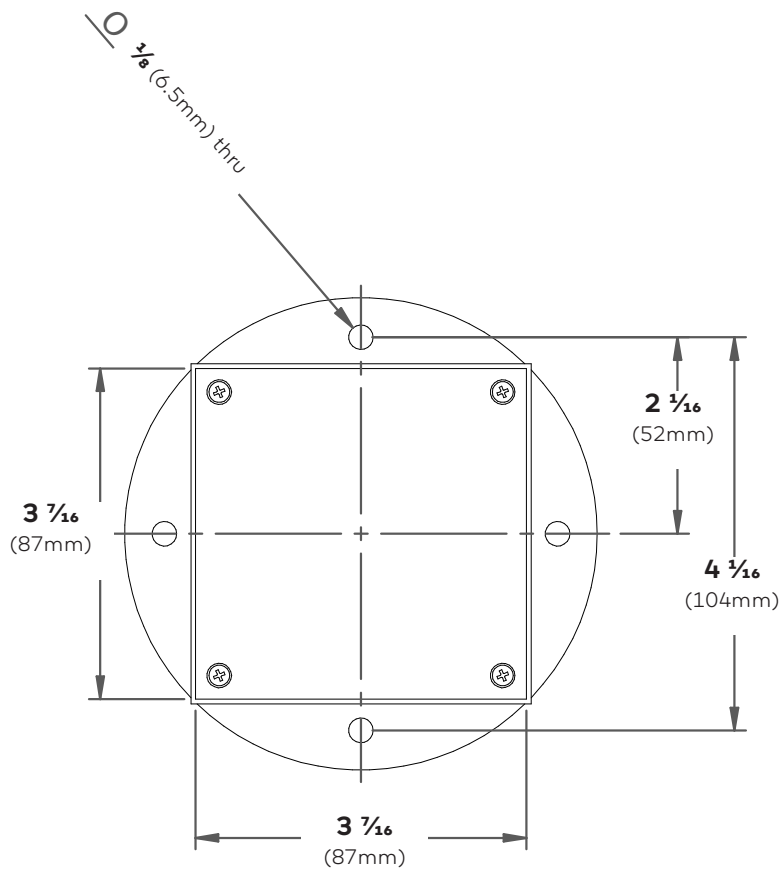
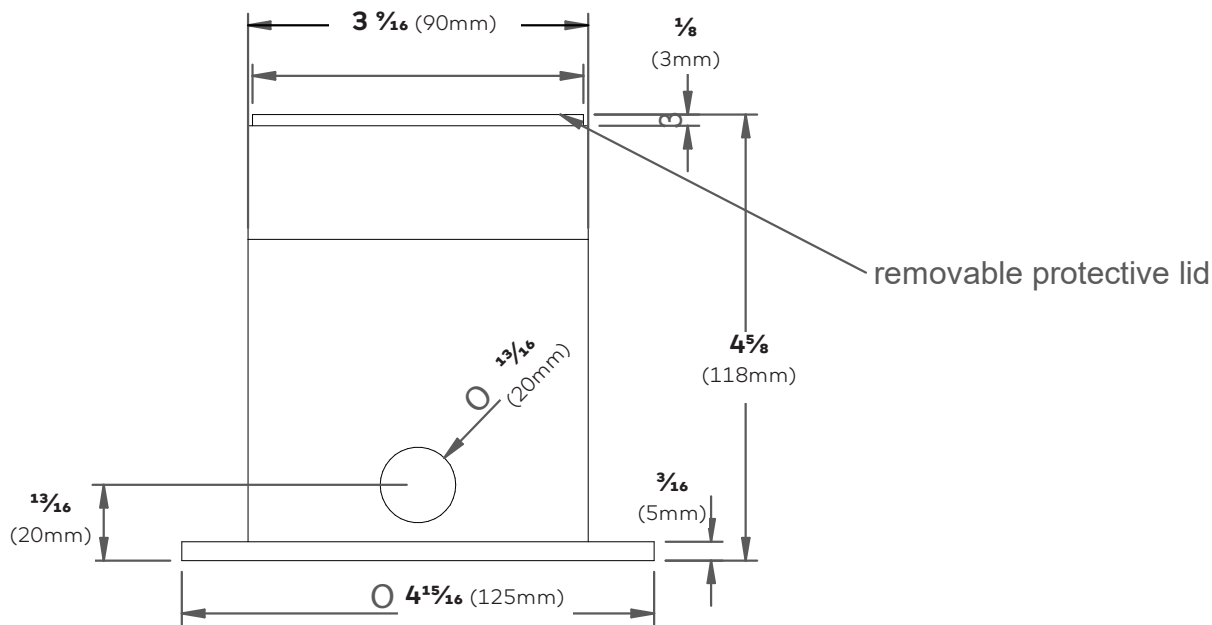
longitudinal cut off spoon optic by Bartenbach Lichtlabor

Recommended wall wash spacing of 2'-5 1/2" (750mm)
from wall and between each fixture.



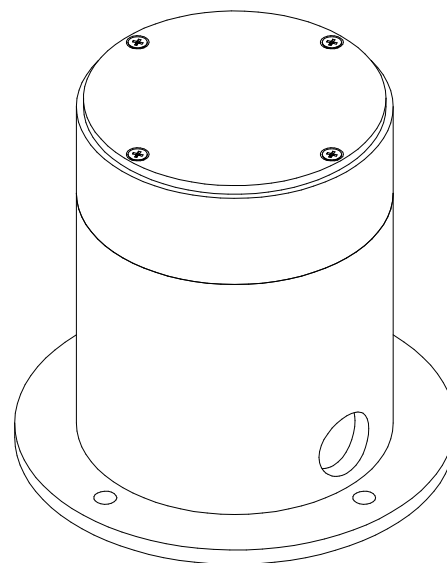
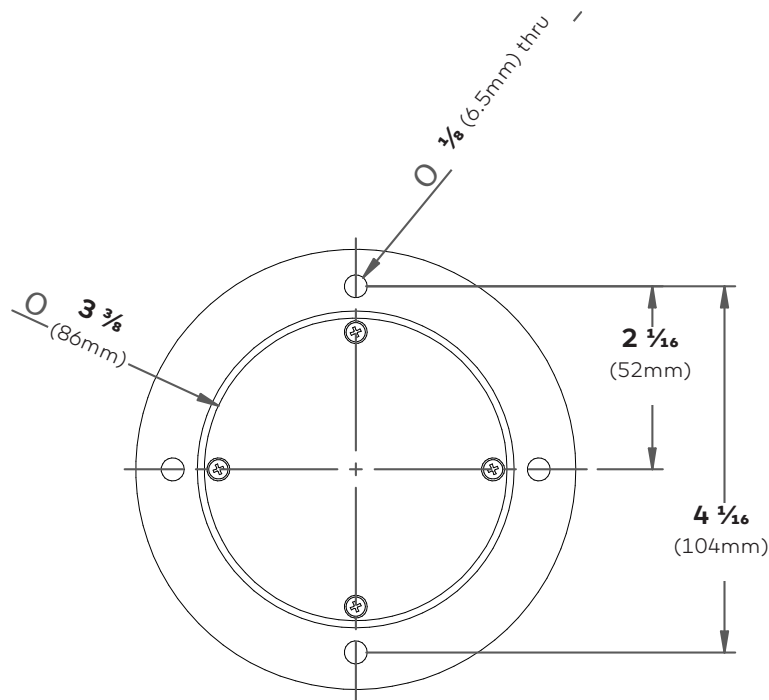
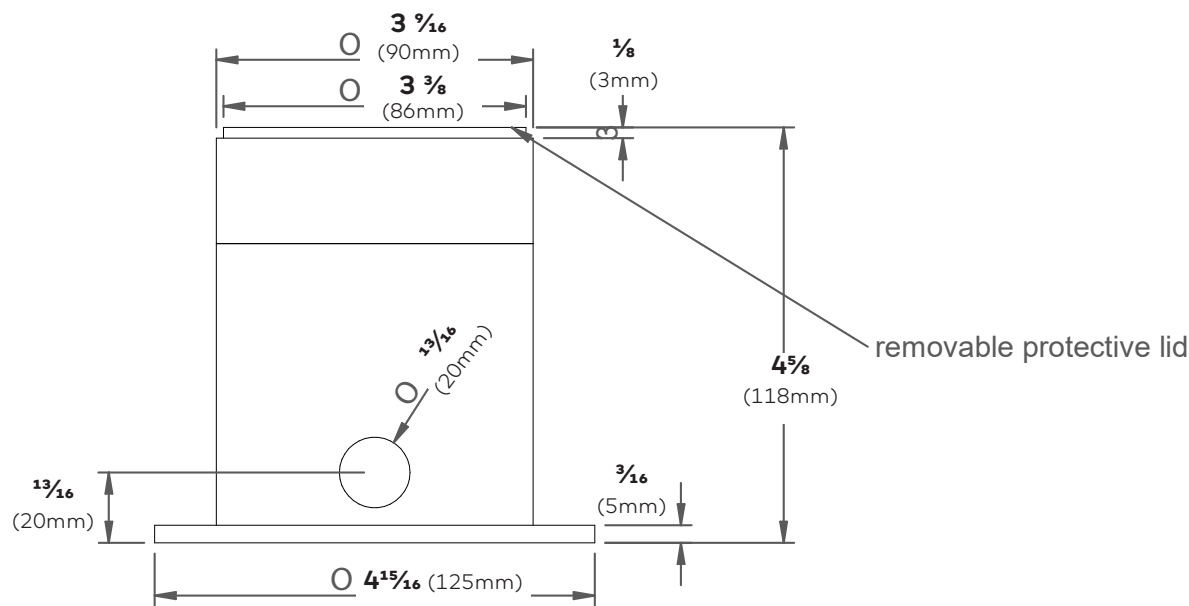
kreon up 80 (gen2)

matchbox - square



kreon up 80 (gen2)

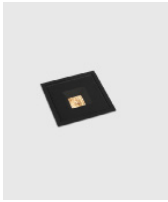
matchbox -circular



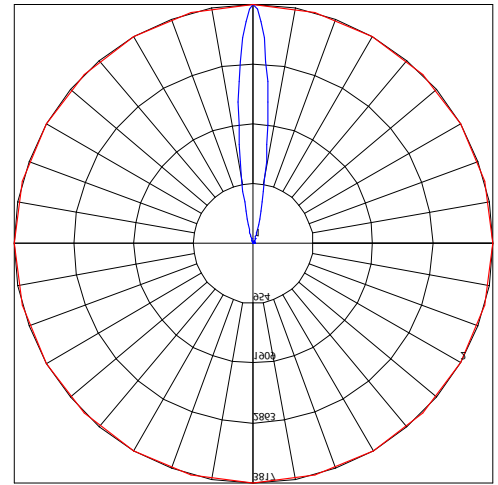
kreon up 80 (gen2)

Photometry

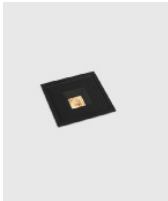
up 80, spot



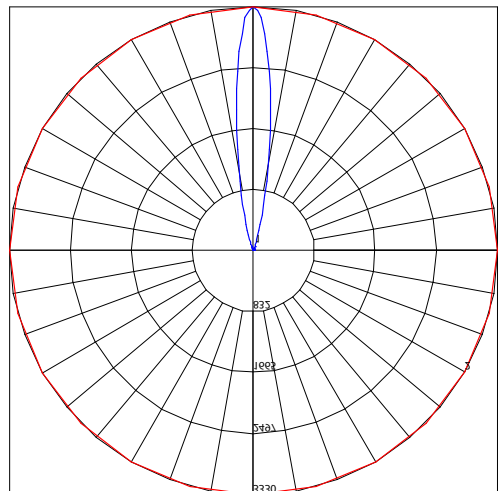
KUUP-80-SP-27-90
CCT:2700k
Power:9W
Delivered Lumens:346lm
Efficiency:38lm/W



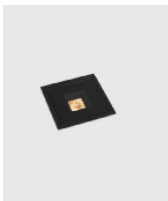
up 80, flood



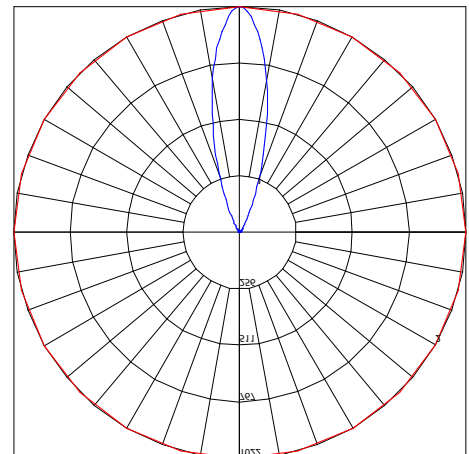
KUUP-80-FL-27-90
CCT:2700k
Power:9W
Delivered Lumens:341lm
Efficiency:38lm/W



up 80, wide flood



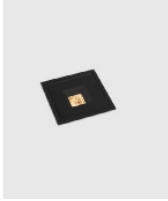
KUUP-80-WFL-27-90
CCT:2700k
Power:9W
Delivered Lumens:293lm
Efficiency:33lm/W



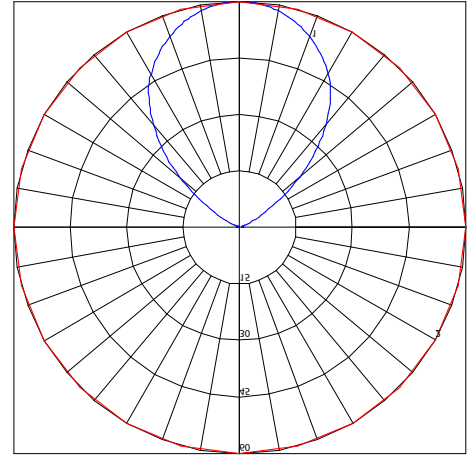
kreon up 80 (gen2)

Photometry

up 80, diffused



KUUP-80-DF-27-90
CCT:2700k
Power:9W
Delivered Lumens:111lm
Efficiency:12lm/W



up 80, wallwash



KUUP-80-WW-27-90
CCT:2700k
Power:9W
Delivered Lumens:263lm
Efficiency:29lm/W

