

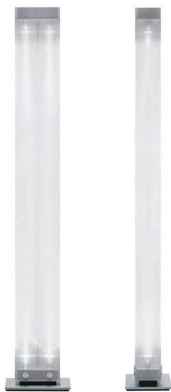
kreon twilight and twilight 360

Date: _____ Customer: _____

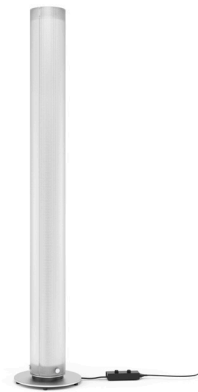
Project: _____

Type: _____ Qty: _____

twilight
(rectangular)



twilight 360
(circular)



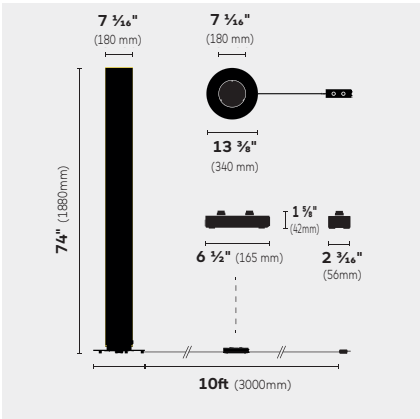
KU _____ - SL- _____ - LED _____ - 80 - TD

kreon twilight	mounting	finish	light source	CCT	CRI	driver
TWI Twilight 10 (rectangular) TWI360 Twilight 360 (round)	SL standing lamp	SS ³ stainless steel base AL aluminum anodized base BZ ² bronze anodized base BK black edition black anodized base with transparent black LED housing	LED	27 2700K WD warm dim	80 CRI80	TD cable integrated touch dimming

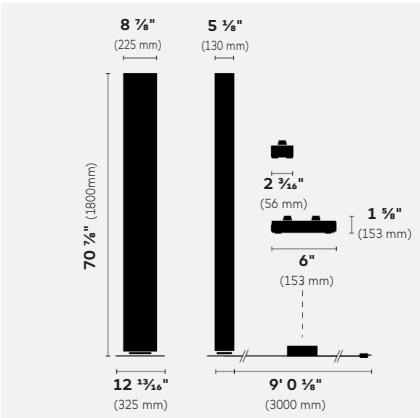
Ordering Example: **KUTWI360-SL-BK-LED=27**

* Intended for indoor use only.
² Only available with TWI360.
³ Only available with TWI.

kreon twilight and twilight 360



twilight 360



twilight

Description

belux twilight sophisticatedly combines brilliant room and mood lighting and has been considered a classic floor-standing lamp for over 15 years. The range now features a cylindrical version, which broadens the lamp's range of potential applications in architectural spaces. belux twilight 360 is available in aluminium and bronze anodized finish. The inner workings of the light fixture feature LED light sources at the top and the bottom, which emit light towards each other and hence produce the belux twilight's characteristic effect. The indirect, high-performance of indirect room lighting. Both light sources can be dimmed independently, enabling endless lighting moods.

The black version completes the existing range. The black base as well as the special black colored column ensure an extravagant 789ambience with a unique lighting atmosphere. Twilight is for indoor use only.

Mounting	floor lamp. twilight 10 (rectangular) available in a base made of stainless steel or black edition. twilight 360 (round) available in aluminum, bronze or black finish.
Material	stainless steel/ aluminum base and fasteners with acrylic semi-transparent LED housing.
Optical system / LED's	Available in 2700K, warm dim. CRI 80+.
Controls / Dimming	cable integrated dimming.

ETL / UL

Testing pending by ETL for installation in the US and Canada. Ingress Protection – IP20

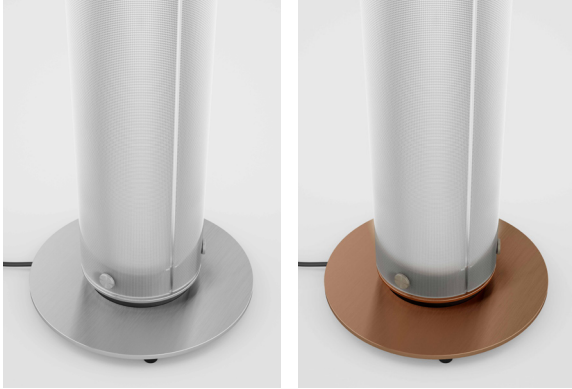


kreon twilight and twilight 360

Finish

twilight 360 base

round, aluminum and bronze



twilight 360 black edition

round, aluminum black base with black semi transparent acrylic.



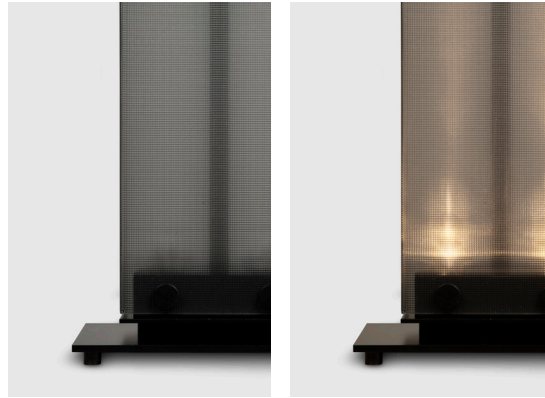
twilight base

rectangle, stainless steel



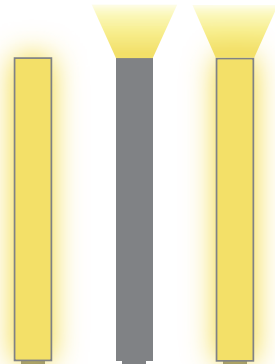
twilight black edition

rectangle, aluminum black base with black semi transparent acrylic.



twilight and twilight 360

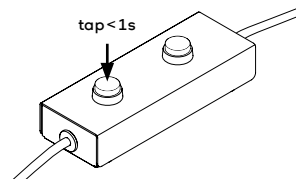
light direction. Direct, indirect or direct/indirect.



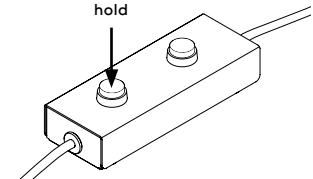
operating

direct and indirect lighting controlled by seperated switches.

on/off



dim



100% ↔ 10%

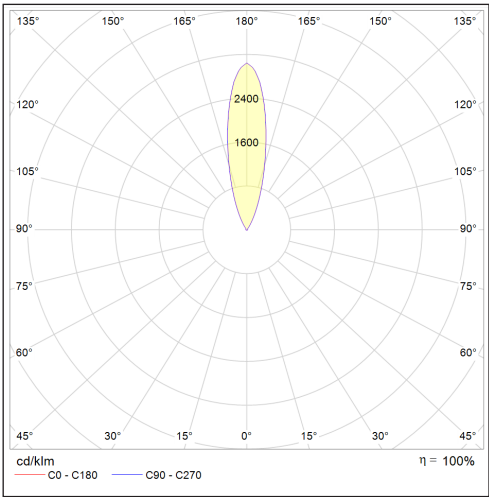
kreon twilight and twilight 360

Photometry

twilight 360



Report Number: 3645
Delivered lumens: 7120lm
CCT: 2700K
CRI: 80+
Efficacy 109 lm/W
Power: 65W



twilight



Report Number: 2335
Delivered Lumes: 6027lm
CCT: 2700K
CRI: 80+
Efficacy 94 lm/W
Power: 64W

