

Prologe 145 – 6" Wide Aperture (Square) Single or Double Module, Surface Mounted

kreon

Date: _____ Customer: _____

Project: _____

Type: _____ Qty: _____

Prologe complements the Kreon collection based on our principles for working with light: quality, architectural integration, and design. Prologe and its profile systems; new light concepts, key elements in a modular system that offers enormous flexibility for composing systematic yet highly individual light scenography

Prologe 145 Surface Mount

Prologe range generates functional light through discrete presence of simple architectural volumes. Through a surface mounted box, Prologe 145 adds fixed and directional light sources to this family. Light beams can be controlled with changeable reflectors and aimed into the room to perform various lighting tasks.

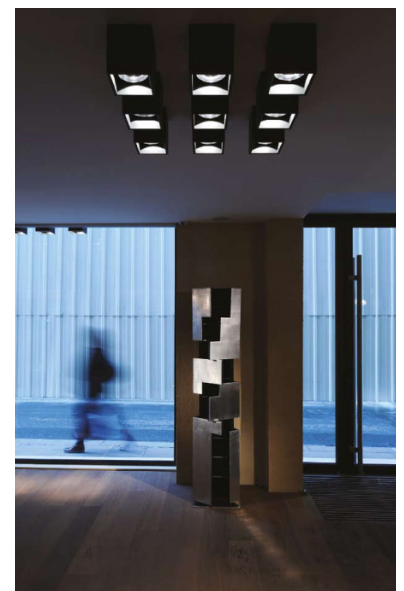
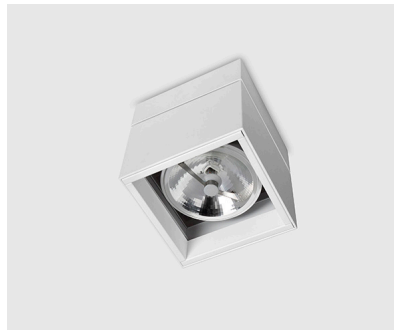
Prologe 145 System uses AR111 or PAR30 lamps (LED retrofit compatible). Kreon recommends Soraa LED lamps for a high quality, energy efficient, field replaceable light source with customizable optic range and light output. Consult factory for specific information.

In addition to the Prologe 145 Surface Mounted Single and Double, the Prologe 145 is also available as In-Dolma and In-Line linear systems.

See Prologe 145 In-Dolma and In-Line Specification Sheet for more information on the options described below.

Prologe 145 In-Dolma & In-Line Systems

Using the In-Dolma linear system allows the individual light modules to protrude below the ceiling plane, while the In-Line version keeps the modules regressed inside the channel and above the ceiling plane.



Prologe 145 – 6" Wide Aperture (Square) Single or Double Module, Surface Mounted



Ordering Code and Options

KU_____ -	_____ -	SF -	_____ -	_____ -
Kreon Prologe 145	Finish Color**	Mounting	Ceiling Type	Line Voltage
98813 – Single Module, PAR30 socket (fixed)*	1 – White	SF – Surface Mount	DW – Drywall/ sheetrock	120 – 120V only
98812 – Single Module, AR111 socket (adjustable 360° x 25°)	2 – Black		GR – ACT panels with grid ceiling	277 – 277V only
98822 – Double Module, AR111 socket (adjustable 360° x 25°)			OT – Other, please consult factory	(PAR30 socket not available with 277V option)
Ordering Example: KU98822-1-SF-GR-120				
All Prologe 145 products are rated for indoor use only, in either a dry or damp location. Contact factory for more information.				
* PAR30 socket compatible with shortneck lamps only				
** Consult factory for custom RAL finish color options.				

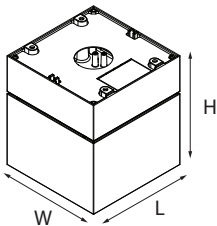
Construction

Prologe 145 Luminaire

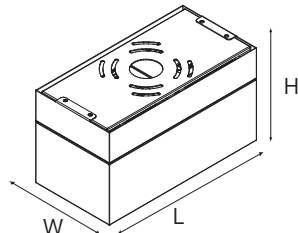
Sheet steel, powder coated.

Finishes or Prologe 145 Single or Double

- White (RAL 9016)
- Black (RAL 9004)
- RAL color finish on request



Prologe 145 Single



Prologe 145 Double

Name	Reference	L x W x H
Prologe 145 Single directional	ku(x)98811_	5 1/2" x 5 1/2" x 6 1/8"
Prologe 145 Single directional	ku(x)98812_	5 1/2" x 5 1/2" x 6 1/8"
Prologe 145 Single	ku98813_	5 1/2" x 5 1/2" x 6 1/8"
Prologe 145 Double directional	ku(x)98821_	11" x 5 1/2" x 6 1/8"
Prologe 145 Double directional	ku(x)98822_	11" x 5 1/2" x 6 1/8"

Electrical Characteristics

PAR 30 lamp socket

120V only (no transformer). Dimmable via line voltage. Check dimming compatibility with lamp chosen.

AR111 lamp socket

20V or 277V (must specify) transformer to 12V. Dimmable via line voltage. Check dimming compatibility with lamp chosen.

Kreon recommends Sora LED lamps for a high quality, energy efficient, field replaceable light source with customizable optic range and light output. Sora LED lamps available from Kreon. Consult factory for details.

Gear

For AR111 lamp socket, supplied with 120V or 277V to 12V transformer. Dimmable via line voltage. Dimming range dependent.



Prologe luminaires are ETL Listed for dry and damp locations. Prologe luminaires lend support for LEED credits and certification.