

Date: _____ Customer: _____

Project: _____

Type: _____ Qty: _____



KUNUIT2- _____ - _____ - _____ - x5- x10 _____ - _____ - _____ - _____ 90 - _____ - _____ ()

kreon nuit gen 2	mounting	ceiling type	channel length	spot modules ^{1,2}	finish ³	light direction	Beam Angle	CCT	CRI	dimming ⁴	optional features
NUIT2 3" made to measure	RN⁵ recessed trimless RF recessed with flange SF surface mount PE pendant mount cable	DW⁵ drywall/ sheetrock TG 9/16 T-Grid SL 9/16 Slot-Grid OT Other, please consult factory	fill in total number of inches of run	Qty x5 spot LED modules Qty x10 spot LED modules Add qty of 1x5 and 1x10 modules desired. *Include layout specifications if available	WH white channel and white LED reveal WHB white channel and black LED reveal BL black channel and black LED reveal BLW black channel and white LED reveal	DW Direct only PE Options DI Direct / Indirect DIS Direct / Indirect (separate control) IN Indirect Only	SP (12°) FL (31°) WF (40°) OV (13° + 36°)	27 2700K 30 3000k 35 3500k 40 4000k	90 CRI90+	D1 triac phase Dimming (10%) 120VAC D2 0-10V Dimming (10%) 120/277VAC D2LD 0-10V dim, low dimming (1%) 120/277VAC D3-2 Lutron Hi-Lume Dim to 1%; 2-wire; 120VAC D3-3 Lutron Hi-Lume Dim to 1%; 3-wire; 120/277VAC D3-ECO Lutron SoftOn/Fade to Black EcoSystem dimming (1%) 120/277V AC D4 - EldoLED 0-10V dimming (0.1%) dim to dark 120/277VAC AWNRR Lutron Athena Wireless Node RF Only (1%) Dimming 120/277VAC	CN corner T T configuration X X configuration HOL4⁶ Holon 40 DRS, FX, PEC or PESD or PESF (provide a copy of the holon 40 spec sheet US order code & QTY*) ORANP⁶ Oran pendant (must specify drop length, provide a copy of the oran pec sheet US order code and QTY*)

¹ Please include rough description of module layout in channel for each type on fixture schedule. Layout confirmed via shop drawing upon order.

² If continues LED modules are desired fixture length must be modified to fit.

³ Consult factory for custom RAL finish options.

⁴ Depending on layout and dimming option, driver may be required as remote. Factory to confirm via shop drawing upon order

⁵ Adjustable mounting bracket accommodates drywall/sheetrock/plaster ceiling between 3/8" and 1" thickness

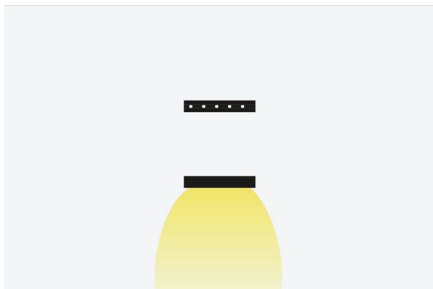
⁶ Cord mounted version only available with black cord color.

Available in quickship - Straight runs only / D1 or D2 dimming / No optional Features

kreon nuit gen 2

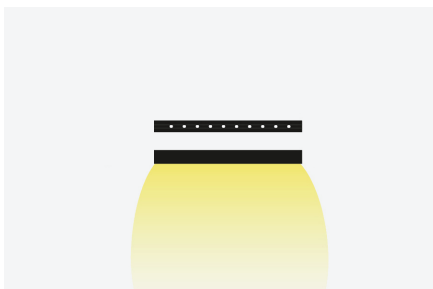


nuit 1x5 spot LED



nuit 2x5 spot LED

(combine the 5 spot LED mod to length you need)



Description

kreon nuit generation 2 is an elementarily designed beam that can be used as an elegant line to bring graphical elements into your architecture. The advanced LED system requires only a slim gap of 2/5" to unfold its light. Its basic form draws minimal attention and can easily be used in combination with other Kreon tools of light, creating an artistic yet responsible use of light sources.

Mounting

available as recessed for drywall/sheetrock or plaster with trimless spackle flange, surface mounted or suspended installation - direct, indirect and direct/indirect lighting.

Finish

Finished in black for a dramatic ceiling contrast or pure white for a more harmonious integration. You can mix and match the look as well - choose black or white for the outer channel and black or white for the inner reveal.

Optical system / LED's

The advanced LED system with slim TIR (Total Internal Reflector) lenses available in units of multiples of 5 LED spots provides a variety of beam angles. kreon nuit 1x5 (5 spots) produces up to 632lm delivered. The core of Nuit Generation 2 is a patented double focus lens optic developed in cooperation with Bartenbach Lichtlabor. Nuit Generation 2 has more beam angle options - adding more possibilities to your design. The luminaire has exceptional glare control and a high efficiency with a lumen maintenance of L70 greater than 60,000 hours.

Color temperatures / CRI

2700K, 3000K, 3500k, or 4000k. CRI 90+

Controls / Dimming

Standard 0-10V dimming, universal voltage (120-277V). For non-dimming applications, cap off dimming wires. Optional smooth dim to dark with eldoLED SOLOdrive LED driver (specify 0-10V or DALI control possible) (120-277V). Driver is integral to fixture in most configurations. If light modules are run continuously, driver may be required to be remote. Consult factory for additional information

Optional Features

corners, x's and t's available with the nuit track. Add a holon 40 pendant or oran pendant within the track for more diversity.

quickship

Need a quick turnaround? Kreon Nuit is now available as a Quick ship Program. Nuit can be delivered in 10 days after your order is placed & released

Straight runs only / D1 or D2 dimming / No optional Features

ETL / UL

ETL and UL for installation in the US and Canada. Ingress Protection - IP20. All prologe single or double products are rated for indoor use only dry location.



Inc.
USA & Canada

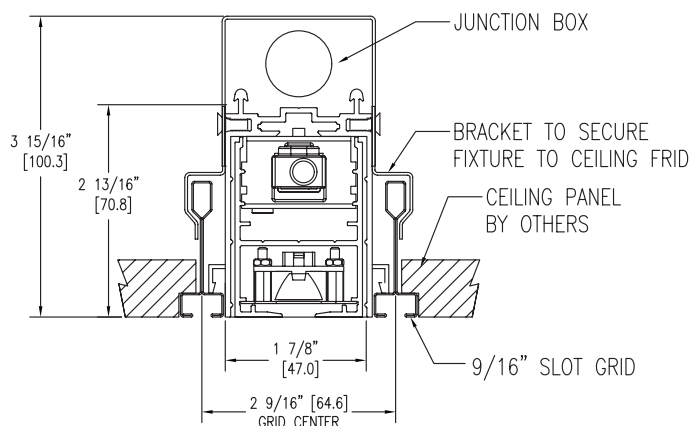
NUIT_GEN2_SPECS_V1.52_06/08/23

20 Murray Hill Parkway, Suite 180
East Rutherford, NJ 07073

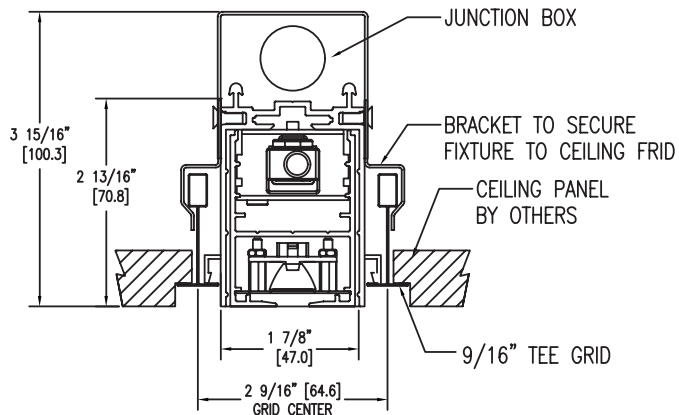
(201)298-4448
techsupport@kreon.com

www.kreon.com

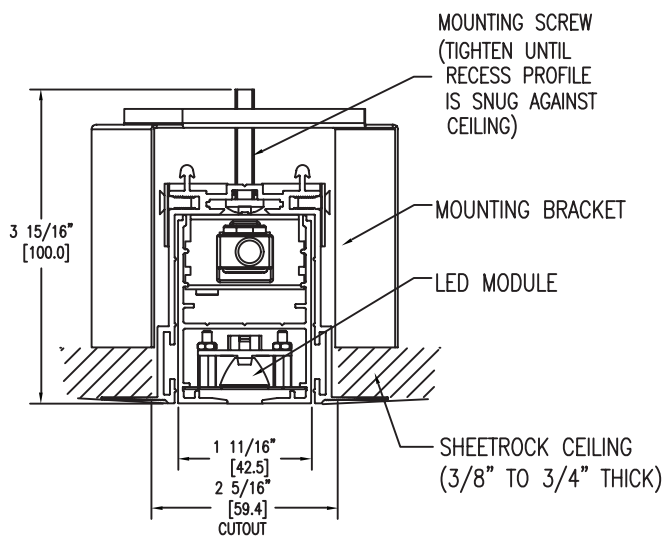
mounting options



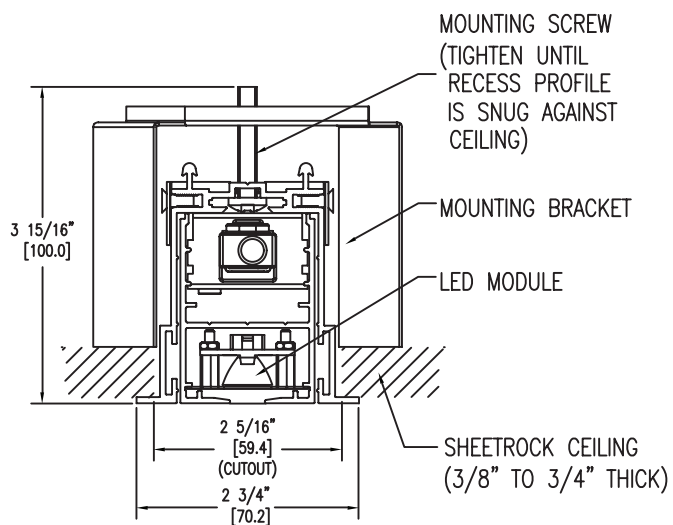
9/16" slotgrid



9/16" tee grid



sheetrock ceiling

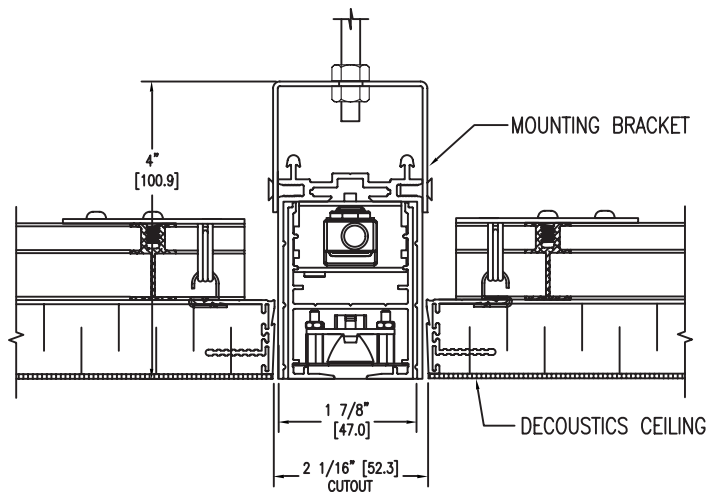


flange installation

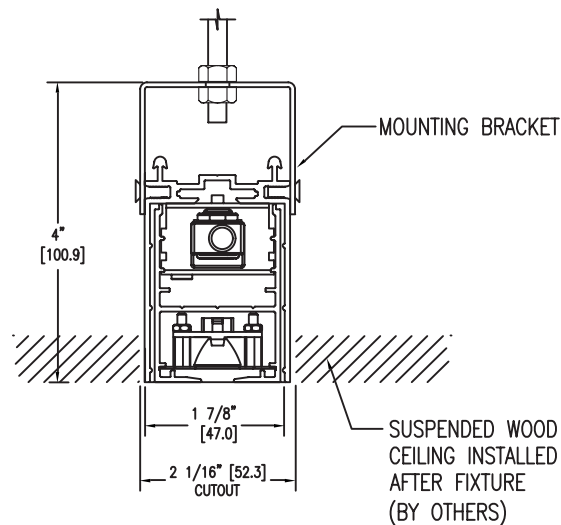
Light modules installed in factory and not intended to be adjusted in the field. Factory will provide shop drawing before order release.

For configurations with integral drivers, D2 and D1 dimming option requires one driver @ 6" long per each 10 total spots. D3 dimming requires one driver @ 15" long per each 15 total spots. D4 dimming requires one driver @ 18" long per each 30 total spots.

recessed mounting hardware options

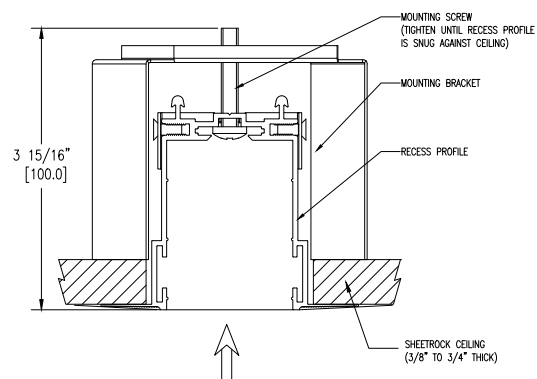
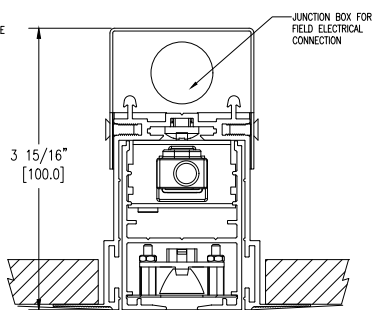
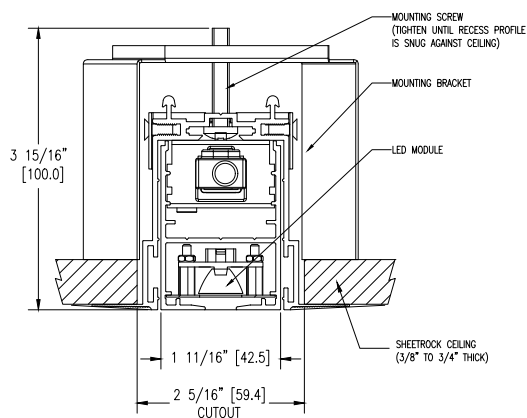


ecoustic ceiling

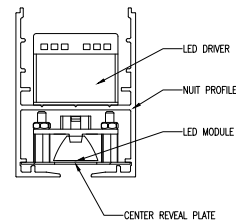


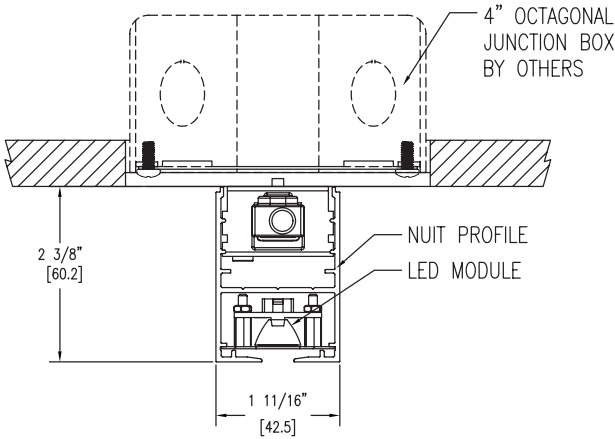
millwork ceiling

plasterkit installation



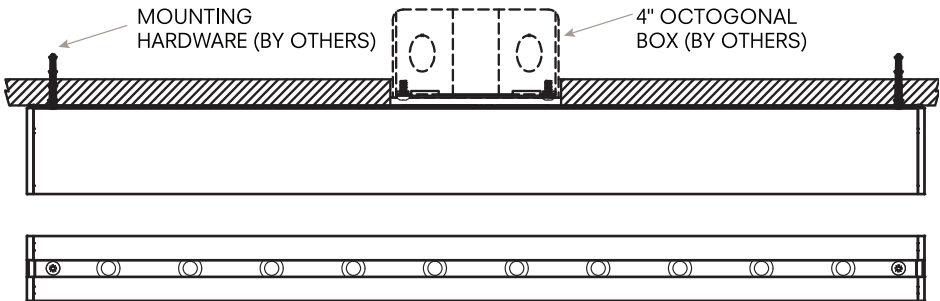
recessed mounted installation



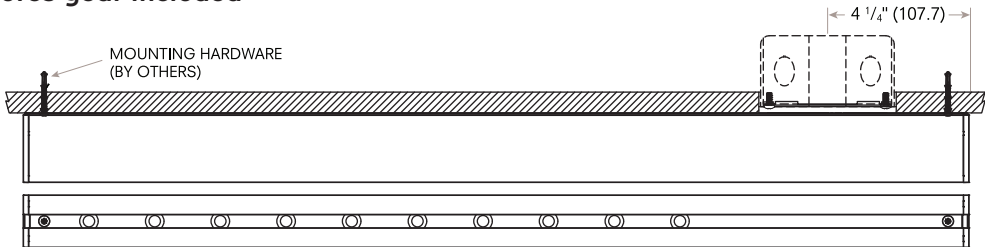


surface mounted installation

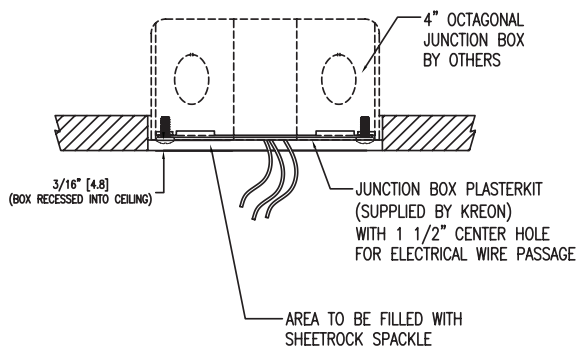
surface mounted fixtures gear excluded



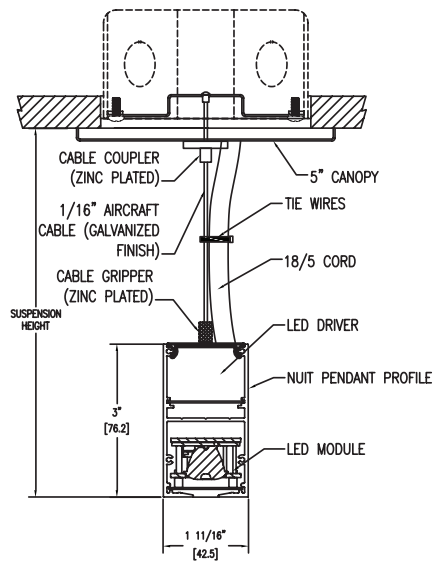
surface mounted fixtures gear included



mounting options (cont'd)

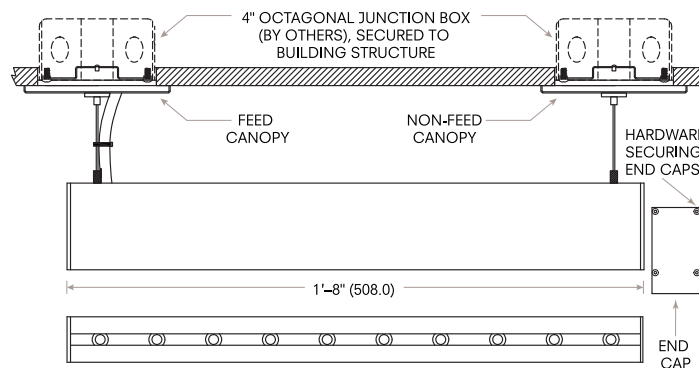


pendant installation



direct / indirect pendant installation

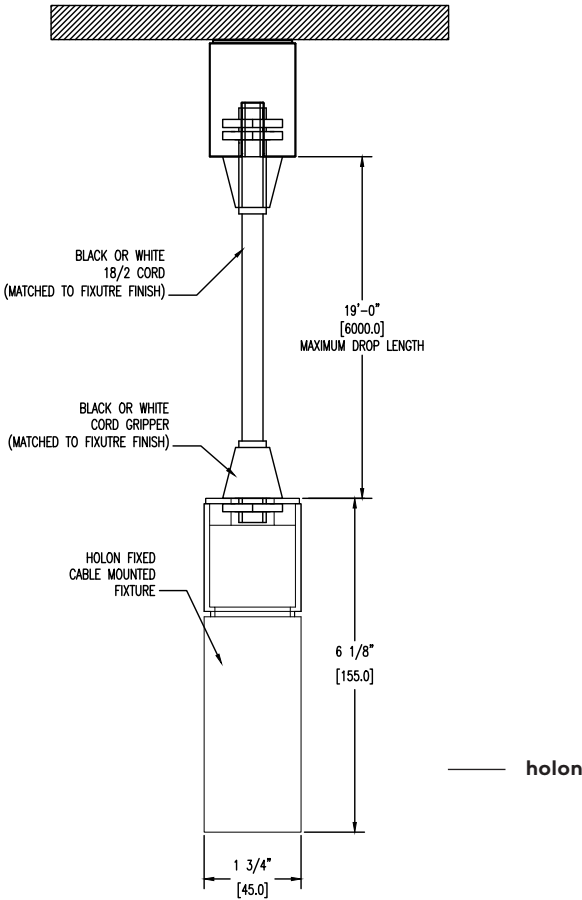
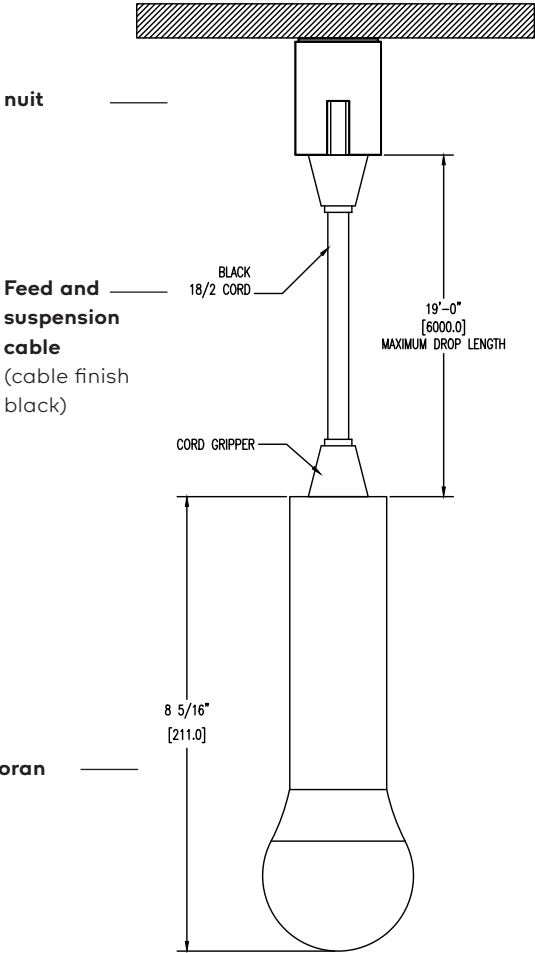
pendant fixture - gear included (internal driver)



kreon nuit gen 2

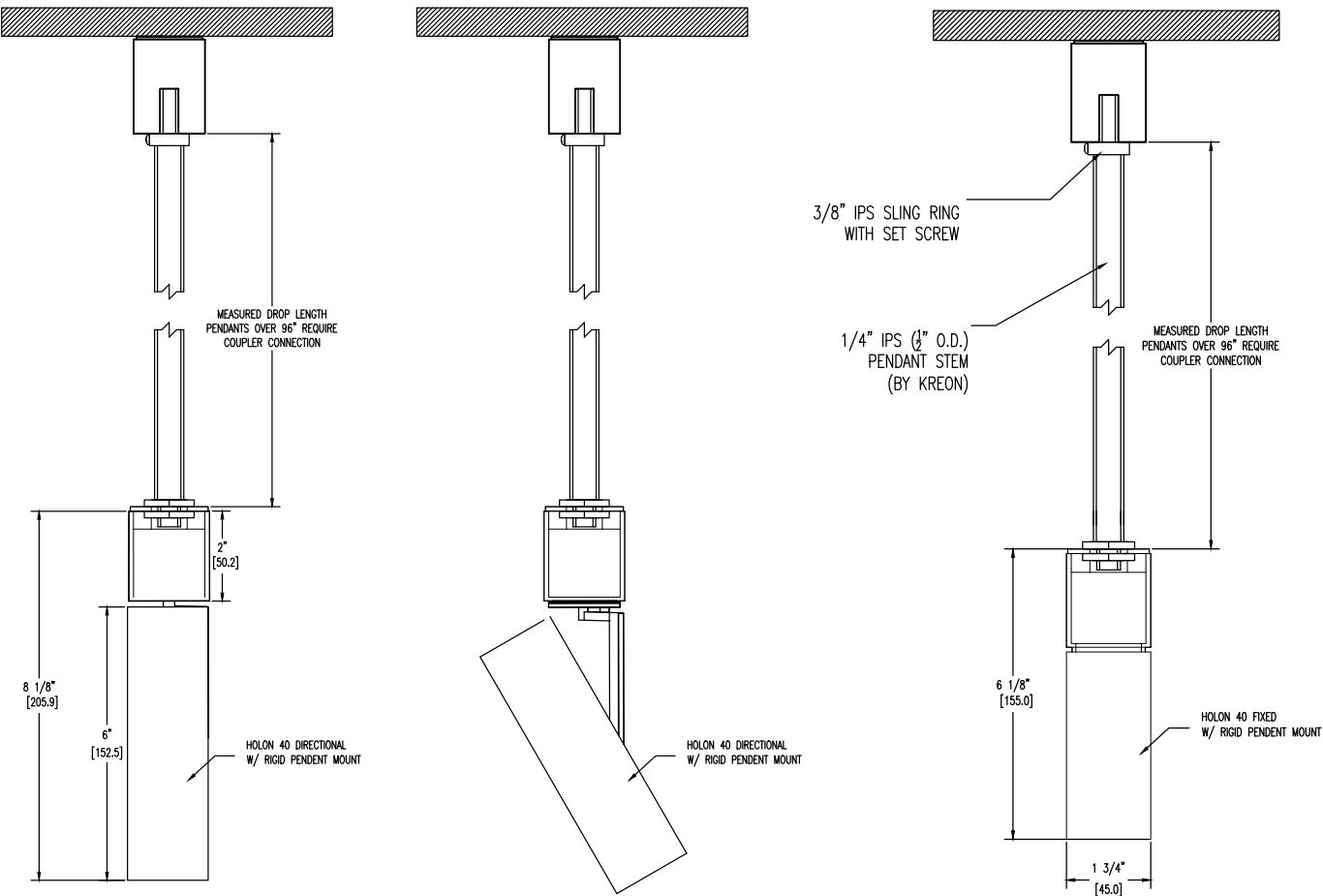
nuit with oran pendant and holon 40 pendant

Specify length of pendant cord.



kreon nuit gen 2

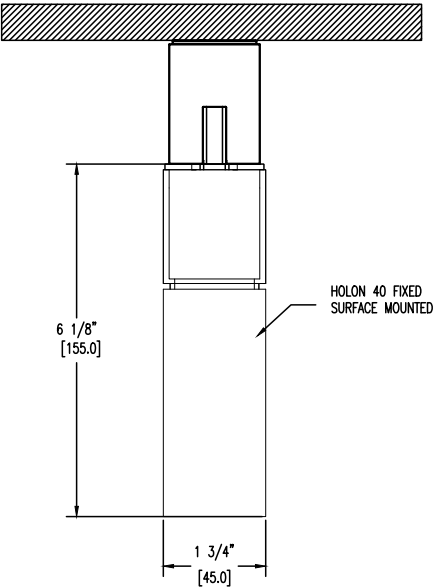
nuit with holon 40 pendant with stem



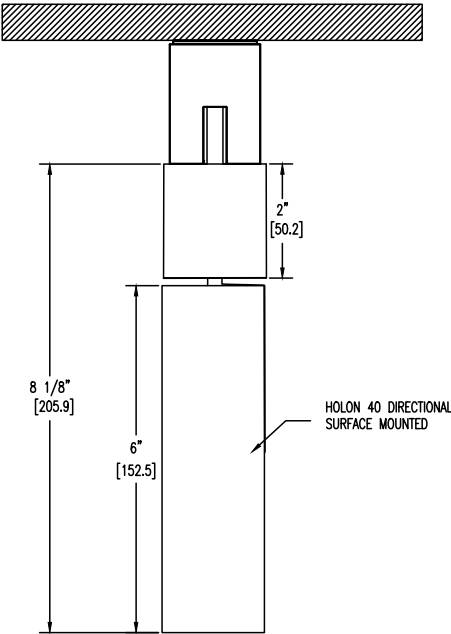
kreon nuit gen 2

nuit with holon 40 directional (DRS) or fixed (FX)

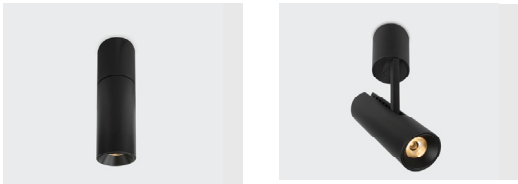
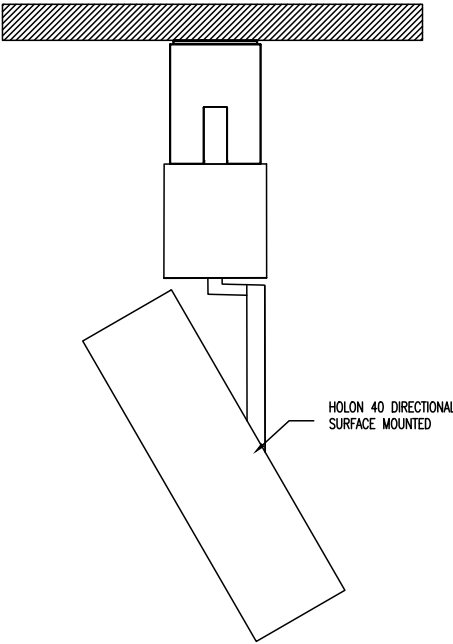
fixed (FX)



directional (DRS)



directional (DRS)



Photometry

nuit 1x5 gen2 spot



Report Number: 95350x9027-SP

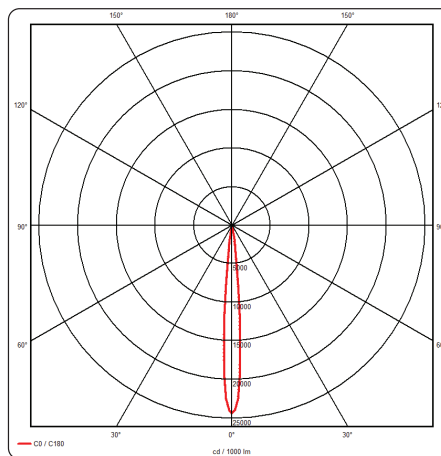
Luminaire Efficacy: 89 lm/W

Delivered Lumens: 621lm

CCT: 2700K

CRI: 90+ Power: 7W per led mod

Beam Angle: Spot



nuit 1x5 Gen 2 Flood



Report Number: 95350x9027-FL

Luminaire Efficacy: 84 lm/W

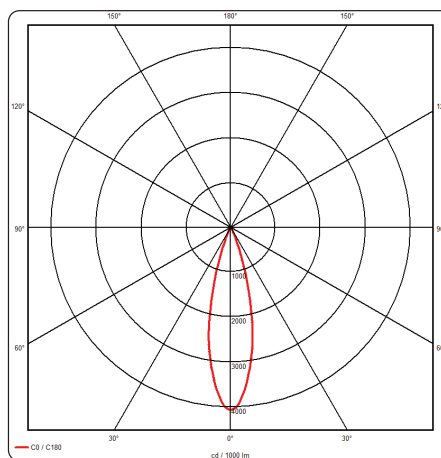
Delivered Lumens: 587lm

CCT: 2700K

CRI: 90+

Power: 7W per led mod

Beam Angle: Flood 31o



Photometry

nuit 1x5 Gen 2 Oval



Report Number: 95350x9027-SC

Luminaire Efficacy: 85 lm/W

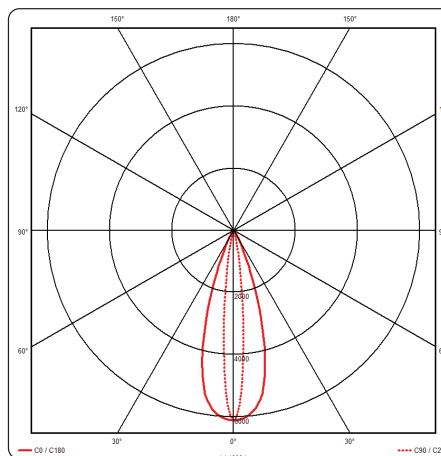
Delivered Lumens: 593lm

CCT: 2700K

CRI: 90+

Power: 7W per led mod

Beam Angle: Oval 13o + 36°



nuit 1x5 Gen Wide Flood



Report Number: 95350x9027-FL

Report # 95350x9027-WFL

Luminaire Efficacy: 90 lm/W

Delivered Lumens: 632lm

CCT: 2700K

CRI: 90+

Power: 7W per led mod

Beam Angle: Wide Flood 40o

