

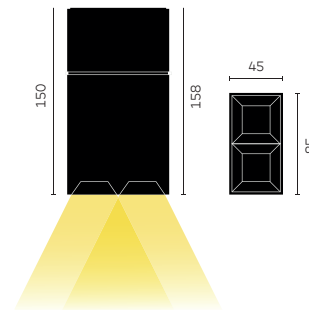
kreon prologe 40

Project private residence
Location Milan, Italy

Architect S.Festini, Voltaire sas
Photographer Serge Brison

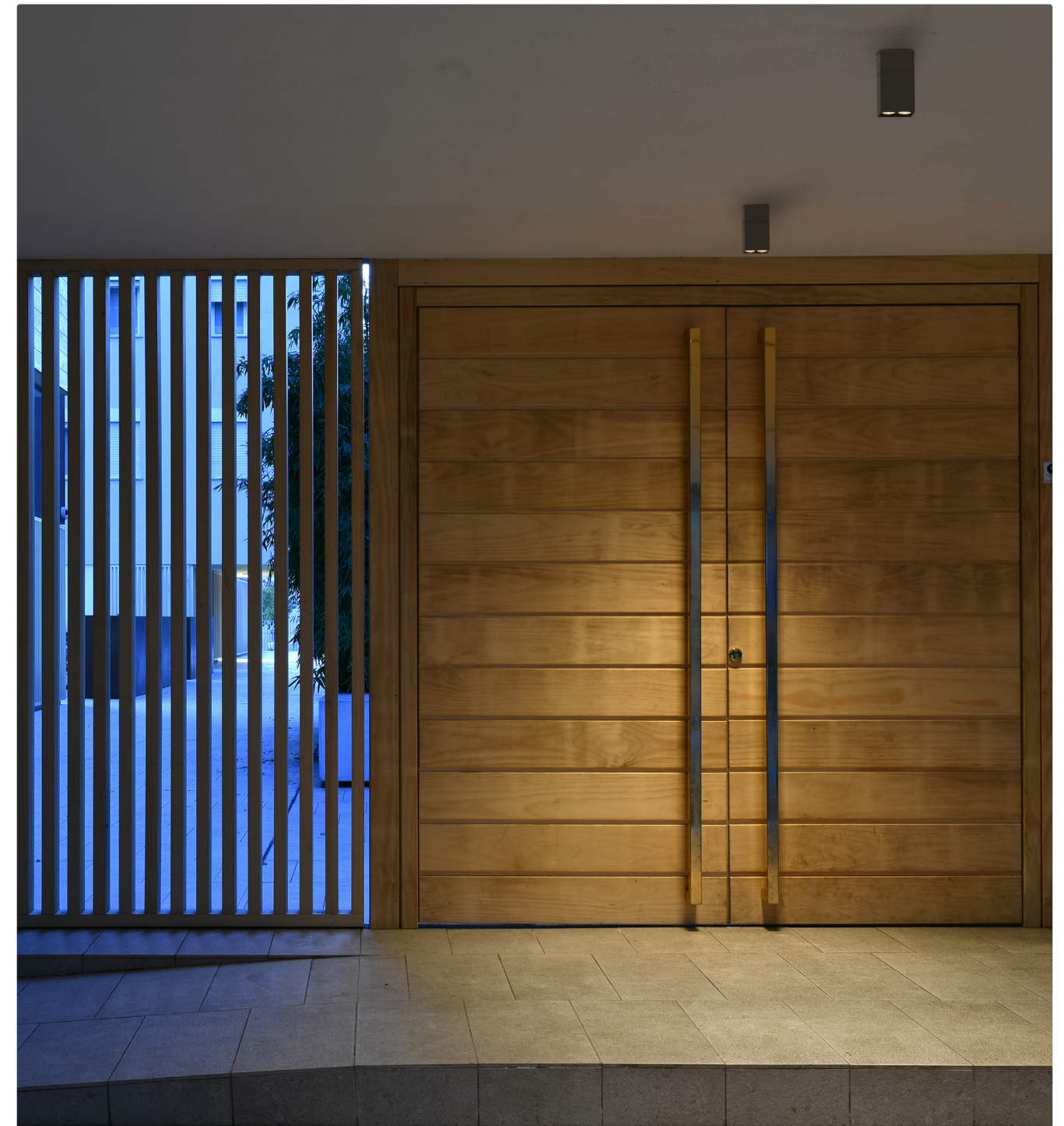
kreon prologe 40 is characterised by its compact form, hosts a double deepset invisible LED source and can be fitted with professional darklight optics with lumen packages up to 920lm. Finished in black for a dramatic contrast or pure white to disappear in the surrounding architecture.

kreon prologe 40 wants to create functional light through the discreet presence of simple architectural volumes in a compact surface mounted box



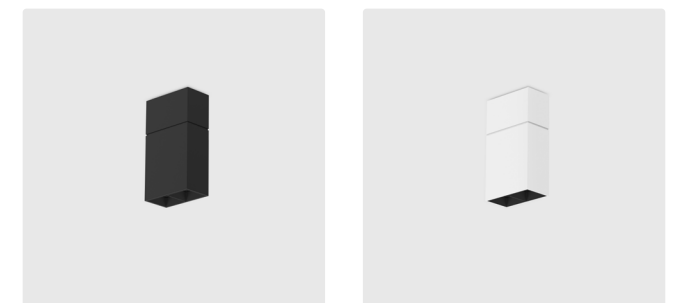
general information

application	surface-mounted luminaire for ceilings	
IP classification	40	
input voltage	230V	
electric gear	included	
louvre	always black for DL/WDL	
illuminant (per lamphead)		
output SP-FL-WFL	912lm	
output DL-WDL	621lm	

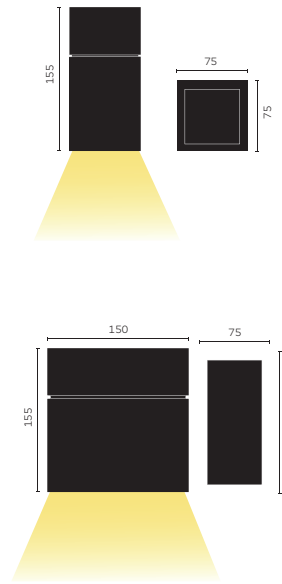


Ordering Codes

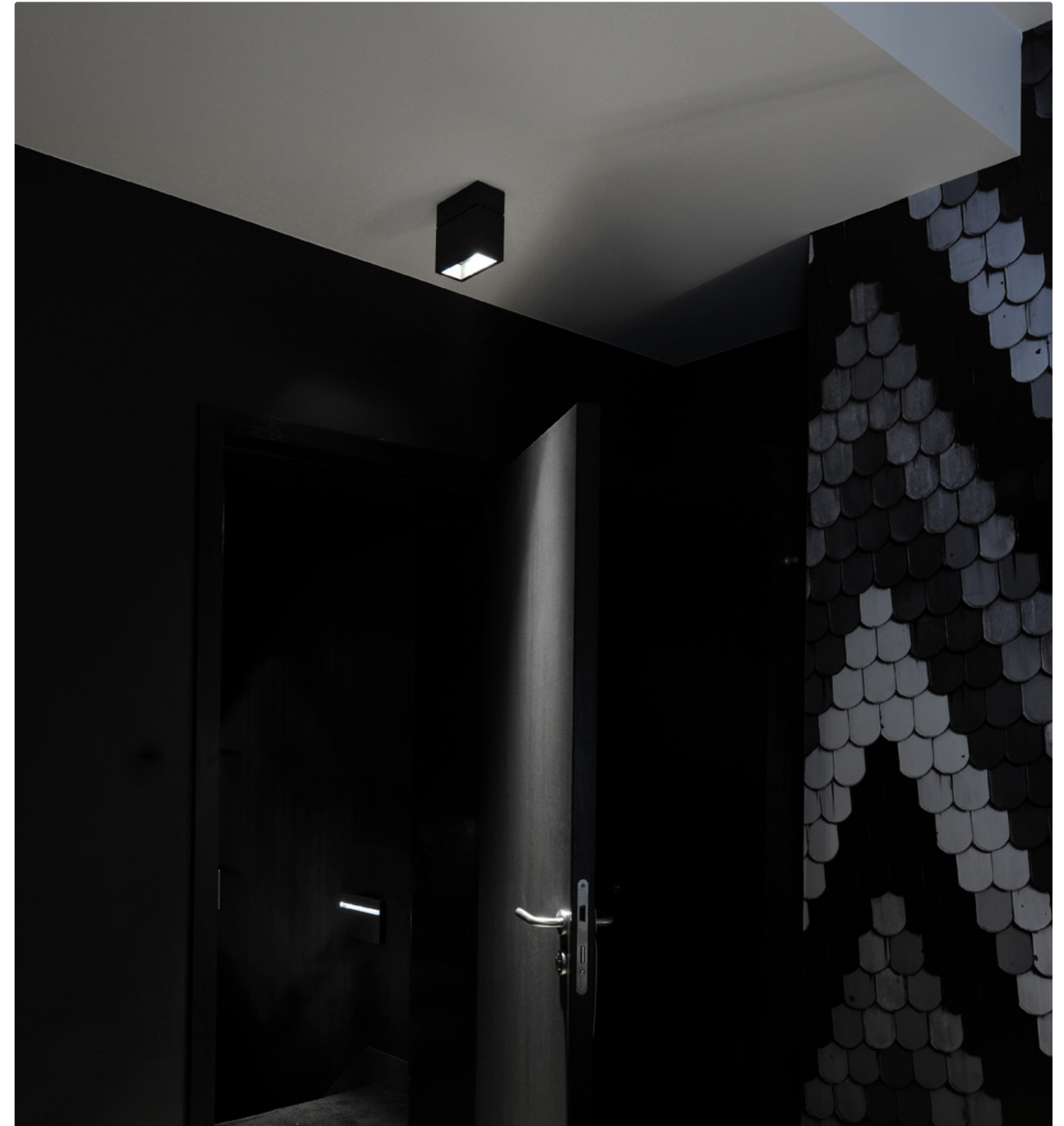
KR_____	___-	__-	—
basic code	CCT-CRI	optic	dim protocol
KR967341 - prologe 40 double, white KR967342 - prologe 40 double, black	9027 9030	SP - spot 20° FL - flood 30° WFL - wide flood 40° DL - dark light 40° WDL - wide dark light 76°	SW - onn off PD - phase dim
Ordering example: KR967341-9027-SP-SW			



kreon prologe 80 is a range of surface mounted cubic downlights characterised by its compact form and deep set LED position. kreon prologe 80 comes in a single and a double version to suit spacial requirements, providing a discreet yet functional solution to general or accent lighting within architecture. Finished in black for a dramatic ceiling contrast or pure white for a more harmonious integration.

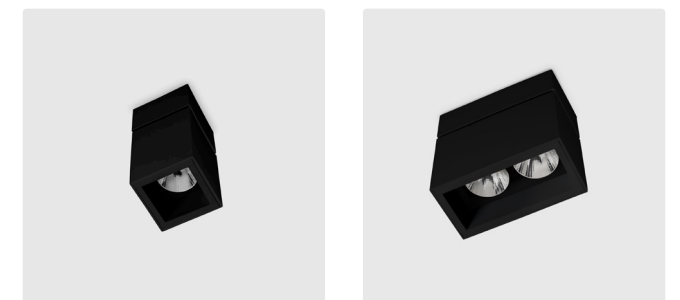


general information		
application	surface-mounted luminaire for ceilings	
IP classification	40	
input voltage	230V	
electric gear	included	
illuminant (per lamphead)		
output	480lm	



Ordering Codes

KR_____	___-	—
basic code	CCT-CRI	dim protocol
KR967131 - prologe 80 single, white KR967132 - prologe 80 single, black	9027 9030	SW - on off
KR967231 - prologe 80 double, white KR967232 - prologe 80 double, black		
Ordering example: KR967131-9027-SW		

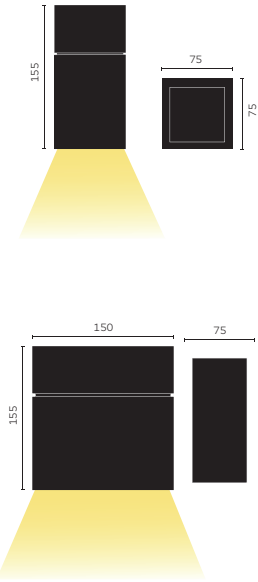


kreon prologe 80 GU10

Project Haut-und Laserzentrum
Location Altmühltal, Germany

Architect Reimann Interior & Design
Photographer Reimann Interior & Design

kreon prologe 80 is a range of surface mounted cubic downlights characterised by its compact form and deep set light source position. kreon prologe 80 comes in a single and a double version to suit spacial requirements, providing a discreet yet functional solution to general or accent lighting within architecture. Finished in black for a dramatic ceiling contrast or pure white for a more harmonious integration.



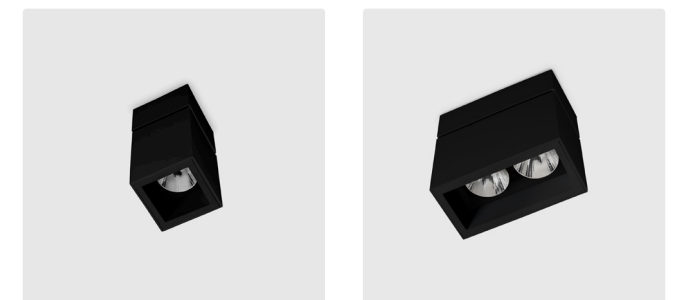
general information	
application	surface-mounted luminaire for ceilings
IP classification	40
input voltage	230V
electric gear	included
illuminant (per lamphead)	
output wattage	according to lamp spec. max. 20W

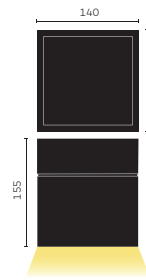
Ordering Codes

KR_____
basic code
KR968131 - prologe 80 GU10 single, white KR968132 - prologe 80 GU10 single, black KR968231 - prologe 80 GU10 double, white KR968232 - prologe 80 GU10 double, black
Ordering example: KR968131 + KR460246

Required Accessory

KR_____
basic code
KR460246 - PAR16 LED 9W 36° 2700K CRI95 KR460246 - PAR16 LED 9W 36° 3000K CRI95
Ordering example: KR763591





general information

application	surface-mounted luminaire for ceilings
IP classification	40
input voltage	230V
electric gear	included

illuminant (per lamphead)

output SP	890lm
output FL	755lm
output WFL	790lm



Ordering Codes

KR____-	___-	__-	—
basic code	CCT-CRI	optic	dim protocol
KR988651 - prologe 145 single, white KR988652 - prologe 145 single, black KR988751 - prologe 145 double, white KR988752 - prologe 145 double, black	9027 9030	SP - spot 14° FL - flood 30° WFL - wide flood 38°	SW - onn off VD - phase dim DD - dali dim
Ordering example: KR988651-9027-SP-SW			

