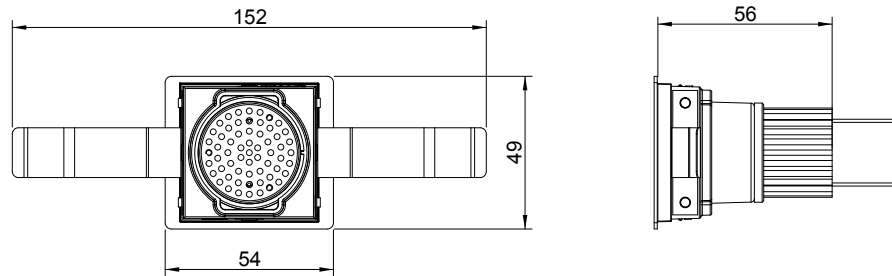


technics

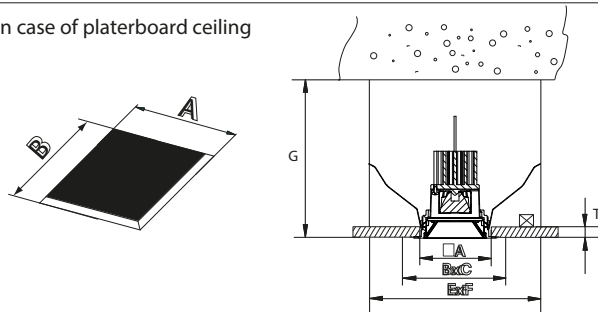


Name	Reference	Drive current
Down 40 fixed	KR95708x-xxxx-xxx	700mA
Down 40 WW	KR95738x-xxxx-xxx	700mA

The luminaire must not under any circumstances be covered with heat insulating covers or similar materials.
Cables must not touch the luminaire housing.
The connection cable must be routed so that it does not touch the lamp when the luminaire is tilted.

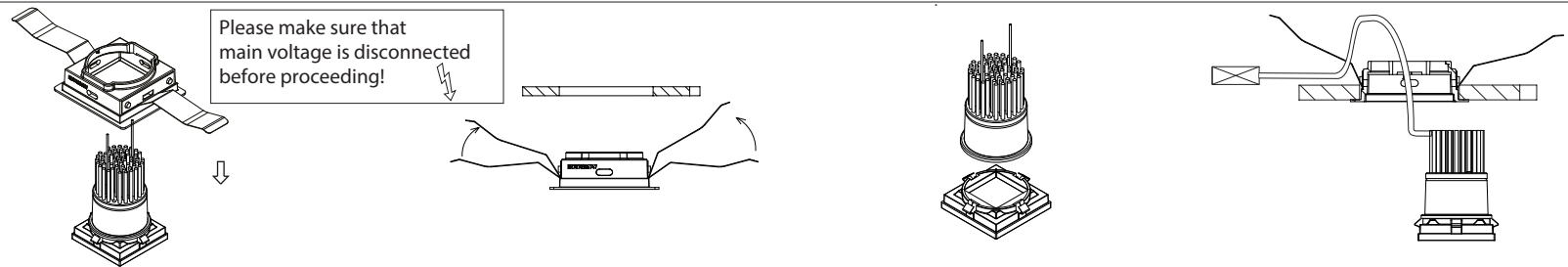
1 dimensions

in case of platerboard ceiling



Name	Reference	A	ExF	G min	T _{min} -T _{max}
Down 40 fixed	KR95708x-xxxx-xxx	45x45	110x110	80	9-26
Down 40 WW	KR95738x-xxxx-xxx	45x45	110x110	80	9-26

2 cut out



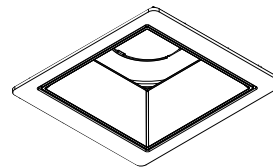
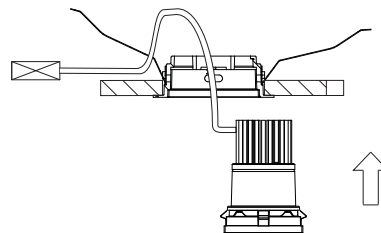
3 installation

Remove louver and module.

Fold the springs inwards to insert into the ceiling.

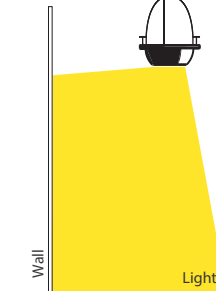
Put the module on the louver to install the module.

In case of transformer or ballast.



Lightbeam

In case of WW



WW

Fixed



4 installation

Put the assembly in the plasterkit until the louver clicks, see also manual or KR8170001762.