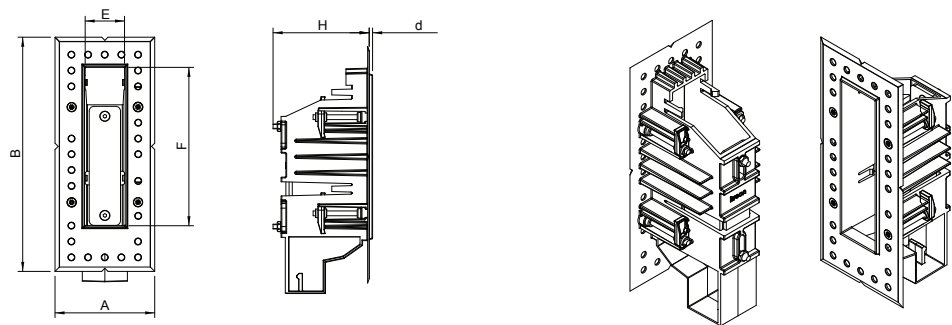


# kreon installation manual

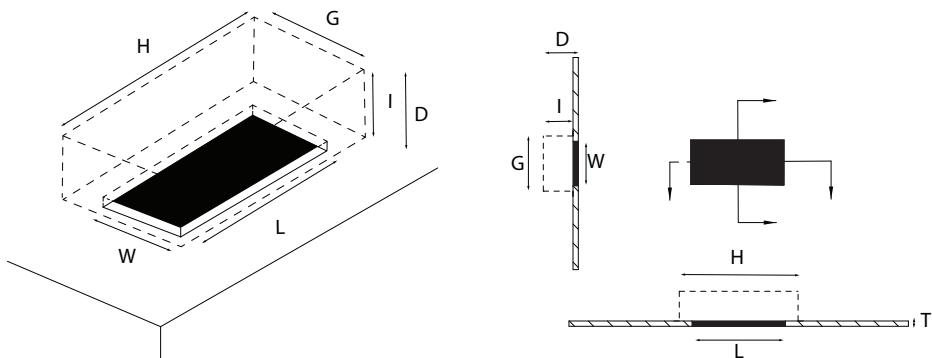
## 1. technics & dimensions



name	reference	AxB	ExF	H	d
KR739000	plasterkit stripe 25	63x148	25x100	60	2,1

Please make sure the main voltage is disconnected before proceeding! ⚡

## 2. installation in plasterboard ceiling



Name	Reference	W	L	D	G	H	I	T-T min-max
KR73900	plasterkit stripe 25	51	124	65	100	190	D-T	9-13

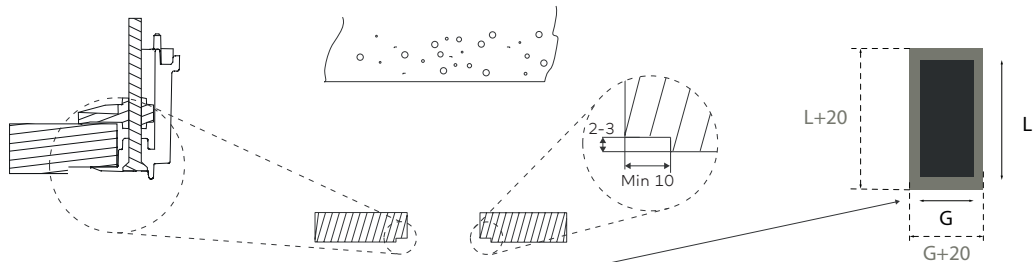
D= minimum installation depth  
WxL= wall cutout for installation

GxHxI= minimum free volume space "behind" wall

In case of concrete wall, see installation manual KR8000002278 + KR8000002279  
In case of brick wall, see installatin manual KR8000002279

## 3. installation

Optional



Optional: For sunken flange: Remove gypsum over the entire contour with a top and edge mill. Advantage: see line 6 sheet 2

# kreon installation manual

## 4. installation

Put the plasterkit through the hole



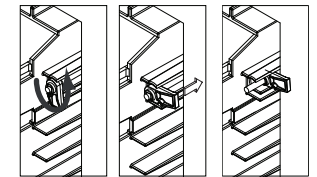
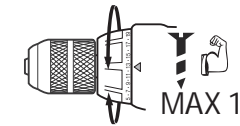
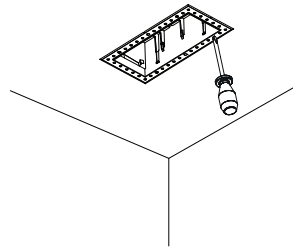
## 5. installation

Fix the plasterkit with the screws.

Assembling torque max 20 CN.m.

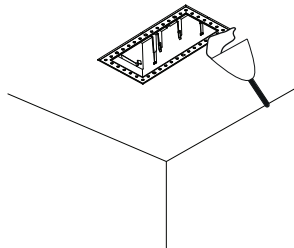
Assembling principle

Please make sure that sticker is removed before proceeding!

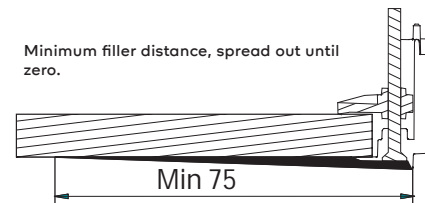


## 6. installation

Fill around perimeter of plasterkit using suitable filler and plaster to hide screws and plasterkit.



Minimum filler distance, spread out until zero.



In case of sunken flange, fill out area is limited to flange.

