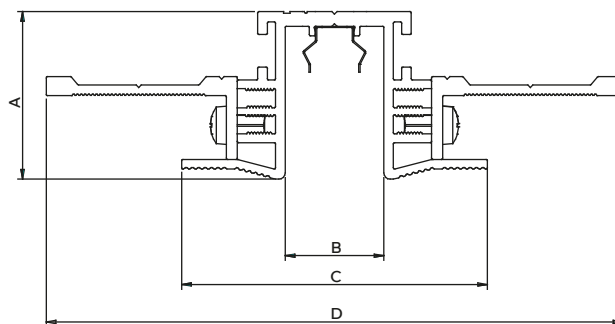


kreon installation manual

technics & dimensions



name	reference	A	B	C	D	Board thickness
Lini 10 plasterkit	KR774210	26	15.5	48	90	12.5/15/18 or 2x12.5mm

Please make sure the main voltage is disconnected before proceeding!



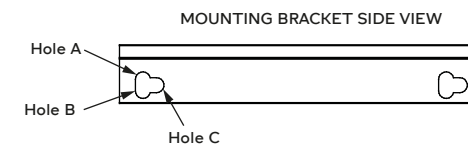
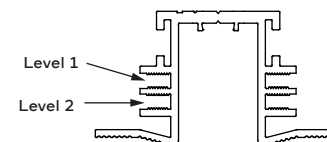
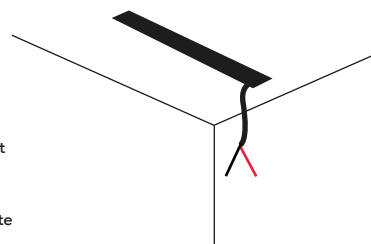
1. installation

In case of plasterboards 12.5, 15 or 18mm

Provide a 50mm wide cut out

Provide 24V cables

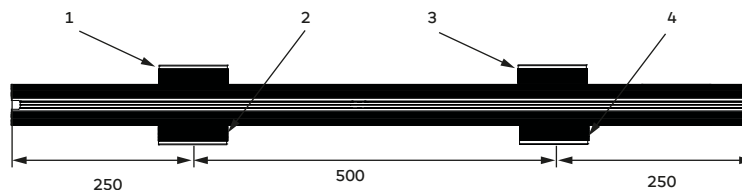
Place power supply on remote



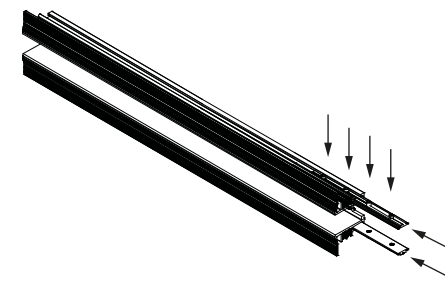
The plasterkit can be mounted to 3 plasterboard thicknesses depending on the level and holes used to screw the mounting brackets

	Level	Hole
Thickness 12.5	2	A
Thickness 15	2	B
Thickness 18	1	C

2. installation



Install mounting brackets to the plasterkit, use 4 brackets per meter

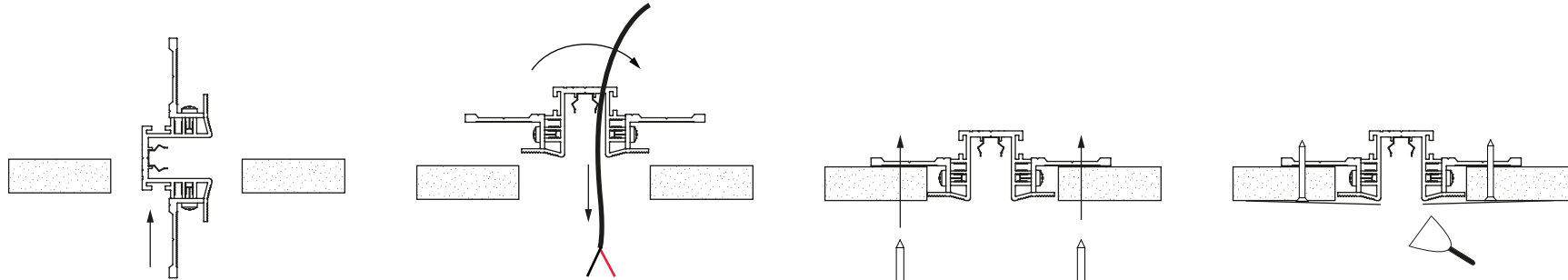


In case of a plasterkit built out of multiple pieces connect the pieces using 2 cross connectors. They slide in sideways and can be fastened with 4 set screws.

The same system is used to connect corners, please check manual KR8000002309

kreon installation manual

3. installation



Pull the cables through the plasterkit and put it in the ceiling. Rotate it in place, the mounting brackets should rest on the plasterboard.

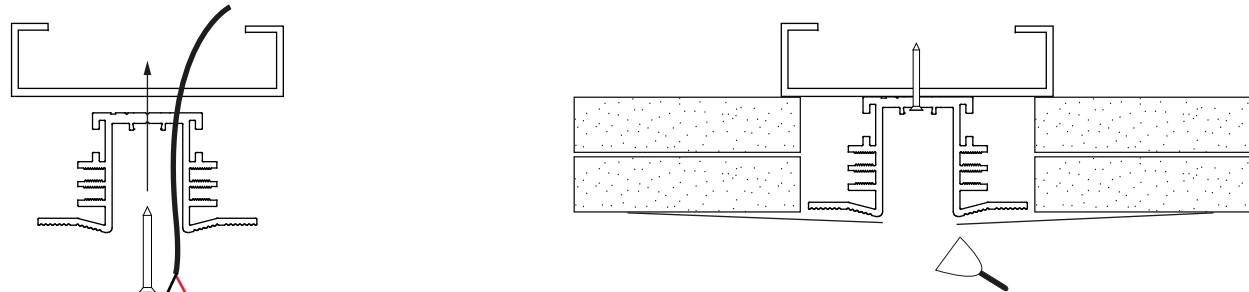
You need 60-55mm of room on top of the gypsum boards to be able to rotate the plasterkit comfortably.

Screw the plasterkit in place. Use suitable screws (not supplied) and screw through the mounting brackets.

plaster the edges to finish.

4. installation

In case of 2 layers of plasterboard 12.5mm

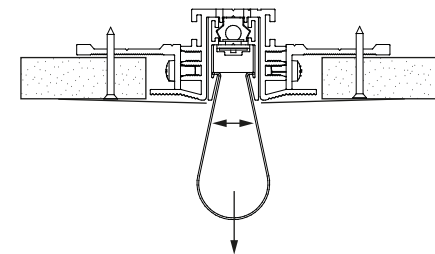
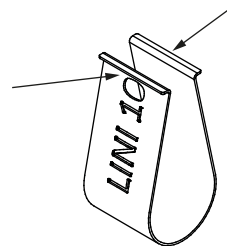


Prepare the ceiling construction, make sure carriers are placed where the plasterkit needs to be installed. Provide 24V cables, place power supply on remote.

Pull the cables through the plasterkit and screw it in place with a suitable screw (not supplied) through the carrier

Place a double layer of 12.5mm plasterboards and plaster the edges to finish

accessories



Included with the plasterkit there is a remover tool. By clamping it's flanges under the edges of an installed Lini 10 profile, the profile can be pulled out of the plasterkit.