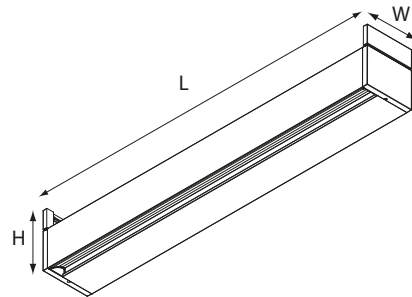


technics



Name

Rei wallwasher recessed profile - on/off

Reference

KR98324x

L x W x H

Lx58x70

Rei wallwasher recessed profile - 1-10V

KR98384x

Lx58x70

Rei wallwasher recessed profile - dali (no touch dim)

KR98354x

Lx58x70

Rei downlight recessed profile - on/off

KR99324x

Lx58x70

Rei downlight recessed profile - 1-10V

KR99384x

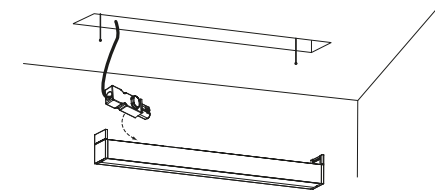
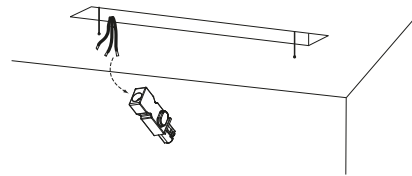
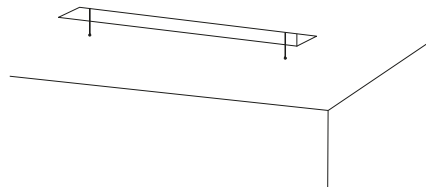
Lx58x70

Rei downlight recessed profile - dali (no touch dim)

KR99354x

Lx58x70

1 dimensions

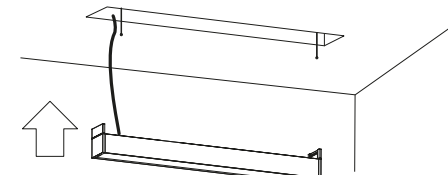
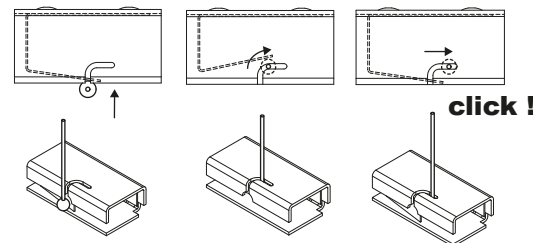
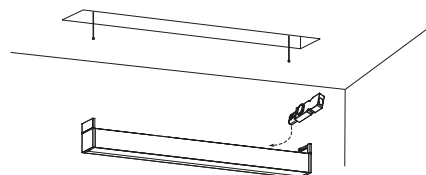


2 installation

To install the plasterkit.
See installation manual KR8830401868.

Connect female connector with strain relief to powersupply and dali dim.

Make correct connection with male connector in the luminaire.

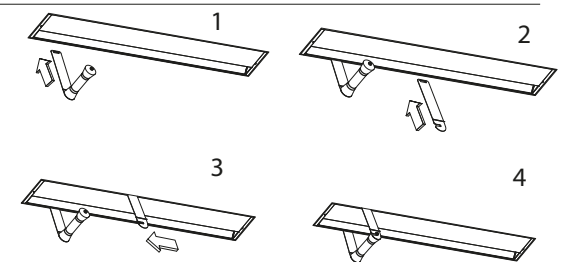
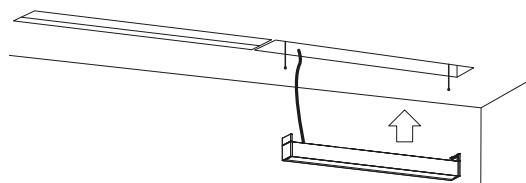
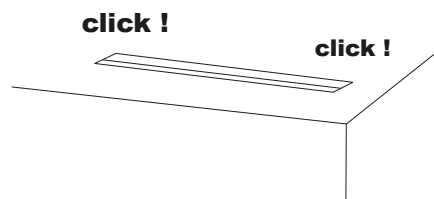


3 installation

Close the unused connectors at the opposite side with the included female connectors.

Add cable to fall safety at both ends. When profile is >2,5m one extra fall safety in the middle.

Add inner profile

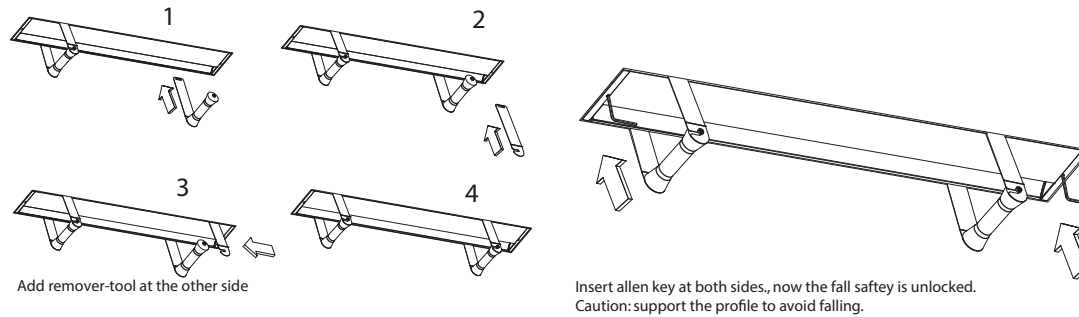


4 installation

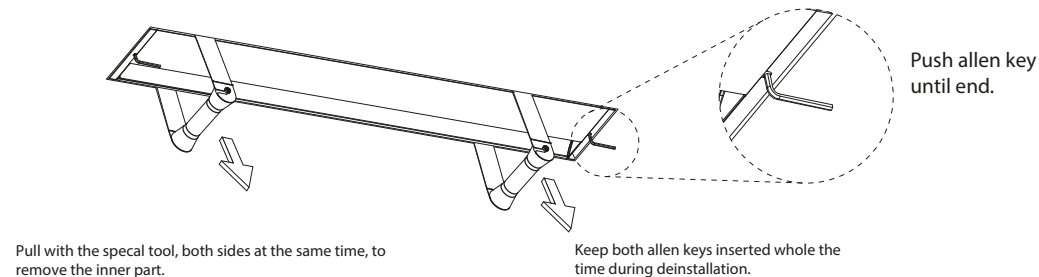
In case of several pieces, repeat previous steps for all pieces.
Caution: match the inner parts with the corresponding plasterkits!

To remove the innerpart, add remover-tool at one side.

5 installation

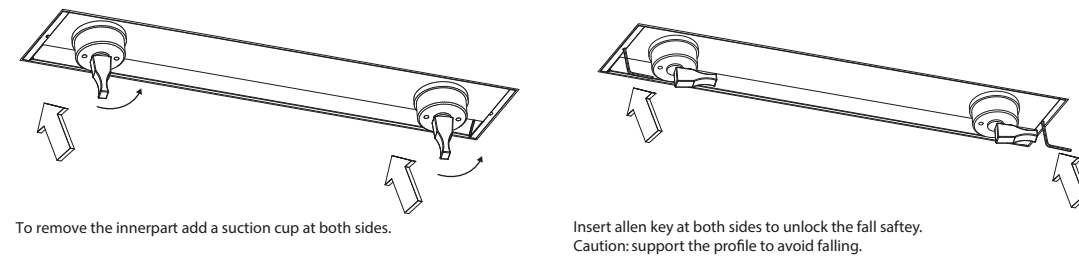


6 installation

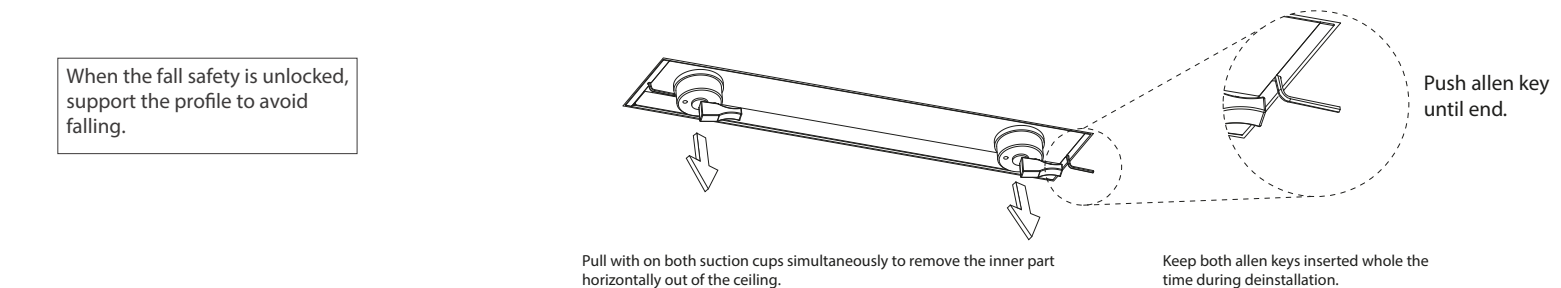


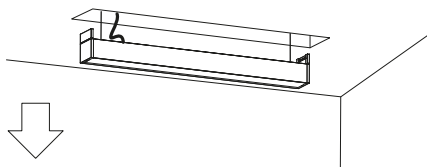
In case of suction cup KR783540

7 installation

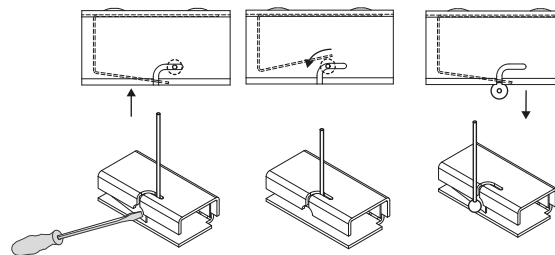


8 installation





6 installation

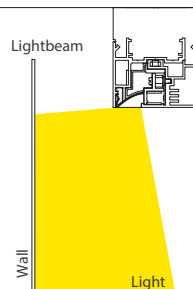


Remove cable from fall safety at both ends. When profile is >2,5m one extra fall safety in the middle.

7 installation

8 installation

in case of wallwasher



9 installation

kreon nv

Industrieweg Noord 1152
3660 Opglabbeek
Belgium

Tel + 32 89 81 97 80
Fax + 32 89 81 97 90

www.kreon.com
mailbox@kreon.be

revision date: 17/01/2017
KR8835401835

Sheet 3/3