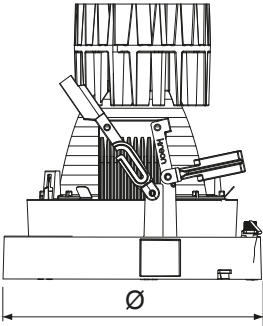
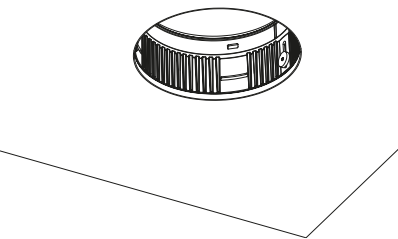


technics



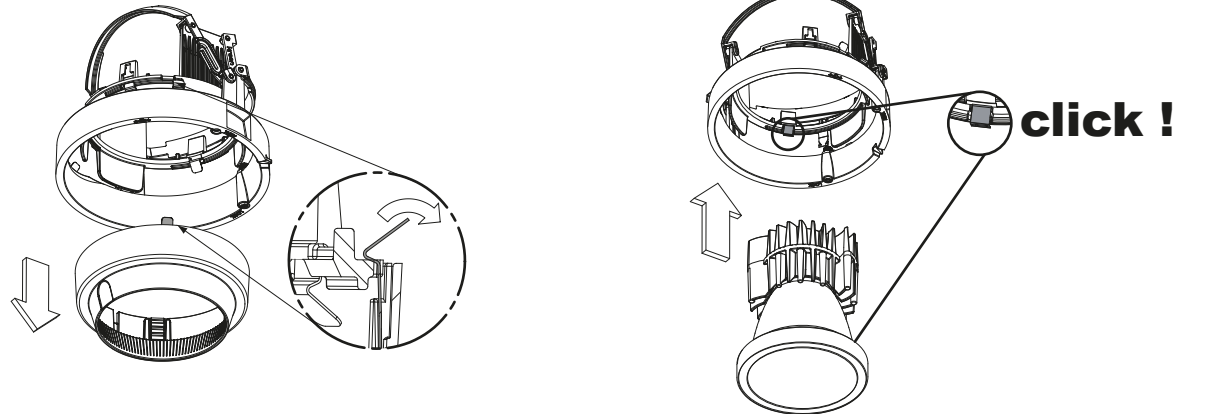
1 dimensions



2 installation

to install the plasterkit.
see installation manual KR8200001623.

fixed by turning it on the LED, underneath the bajonet ring



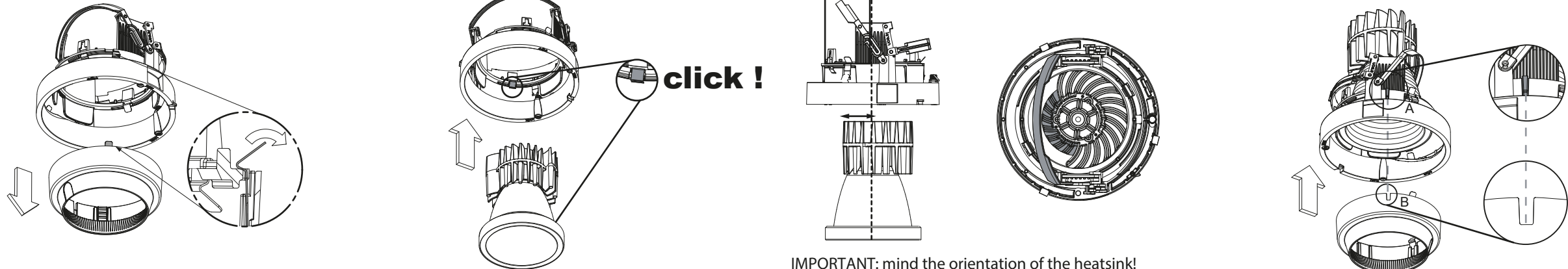
3 installation

bend the springs to remove the filterholder.

insert the reflector-LED assembly in the Aplis
the border of the reflector has to snap on the springs

IMPORTANT: mind the orientation of the heatsink!
the shortest side of the heatsink is on the side of the
aplis with the longest rod

install the filterholder again by first alining
A and B



4 installation

click !

Please make sure that
main voltage is disconnected
before proceeding!

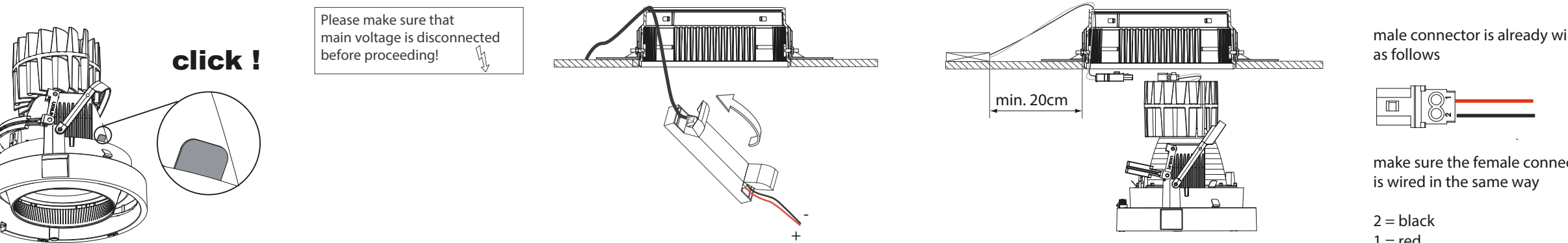
install the correct gear with strain relief
on the hollow ceiling

important: always check the polarity!!
+ = red wire - = black wire

male connector is already wired
as follows

make sure the female connector
is wired in the same way

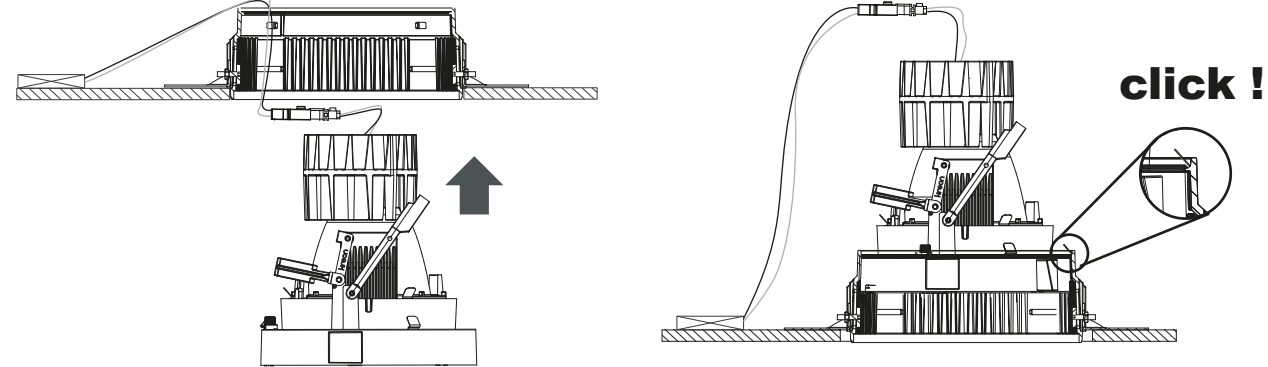
2 = black
1 = red



Name	Reference	current	Ø
Aplis/Down in-line 165 LED directional	KR917343-xxxx	1050mA	154
Aplis/Down in-line 165 LED directional	KR917833-83xx	700mA	154
Aplis/Down in-line 165 LED directional	KR917833-98xx	500mA	154

Name	Reference
spot reflector Ø 110	KR720032
flood reflector Ø 110	KR720034
wide flood reflector Ø 110	KR720036

technics



5 installation

Put the assembly in the plasterkit.

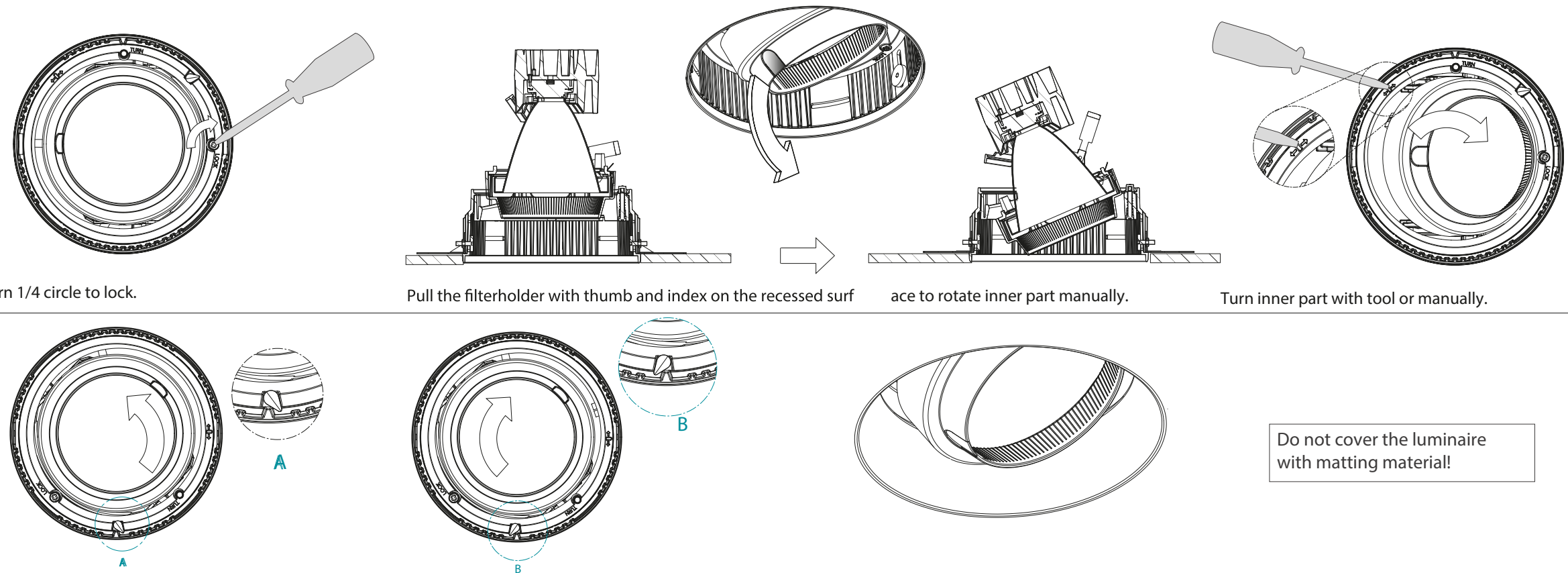
6 installation

Turn 1/4 circle to lock.

Pull the filterholder with thumb and index on the recessed surf

ace to rotate inner part manually.

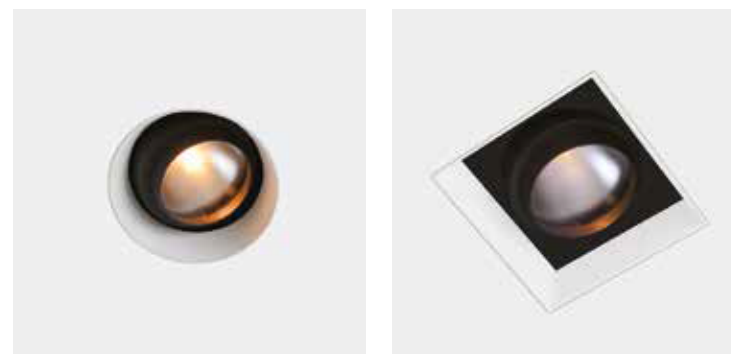
Turn inner part with tool or manually.



Can rotate 360°.

To install the louvre see manual KR8170001643.

7 installation



8 installation

kreon nv

Industrieweg Noord 1152
3660 Opglabbeek
Belgium

Tel + 32 89 81 97 80
Fax + 32 89 81 97 90

www.kreon.com
mailbox@kreon.be

revision date: 31/01/2018 sheet 2/2
KR8178331829