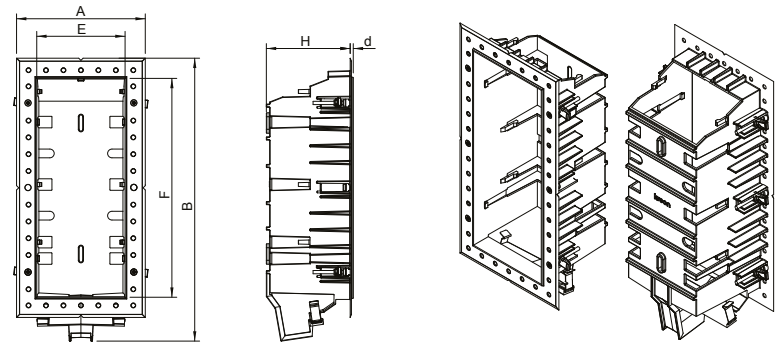


kreon installation manual

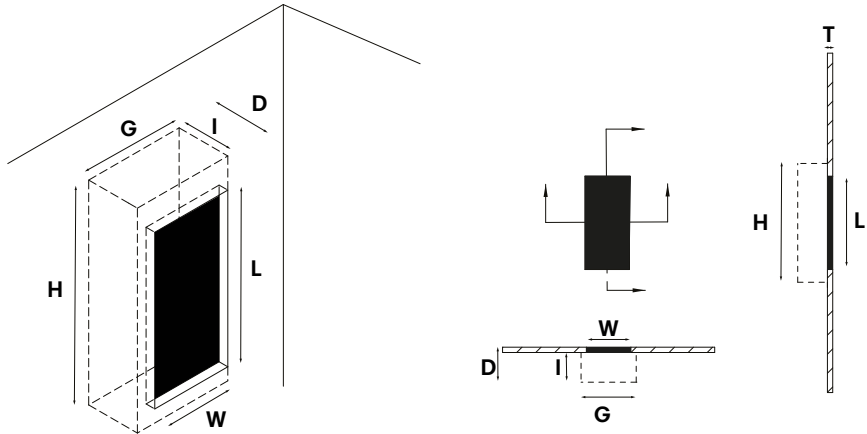
1. technics & dimensions



name	reference	AxB	ExF	H	d
KR775120	plasterkit side in line 25x100	63x148	25x100	55	3
KR775320	plasterkit side in line 40x100	78x148	41x100	77	3
KR775420	plasterkit side in line 40x200	78x259	41x200	77	3
KR775620	plasterkit side in line 80x200	118x259	81x200	77	3

Please make sure the main voltage is disconnected before proceeding! ⚡

2. installation gypsum wall



Name	Reference	W	L	D	G	H	I	T-T min-max
KR775120	plasterkit SIL 25x100	51	124	58	100	190	D-T	9-13
KR775420	plasterkit SIL 40x200	65	220	80	100	290	D-T	9-13
KR775320	plasterkit SIL 40x100	65	124	80	100	190	D-T	9-13
KR775620	plasterkit SIL 80x200	105	220	80	140	290	D-T	9-13

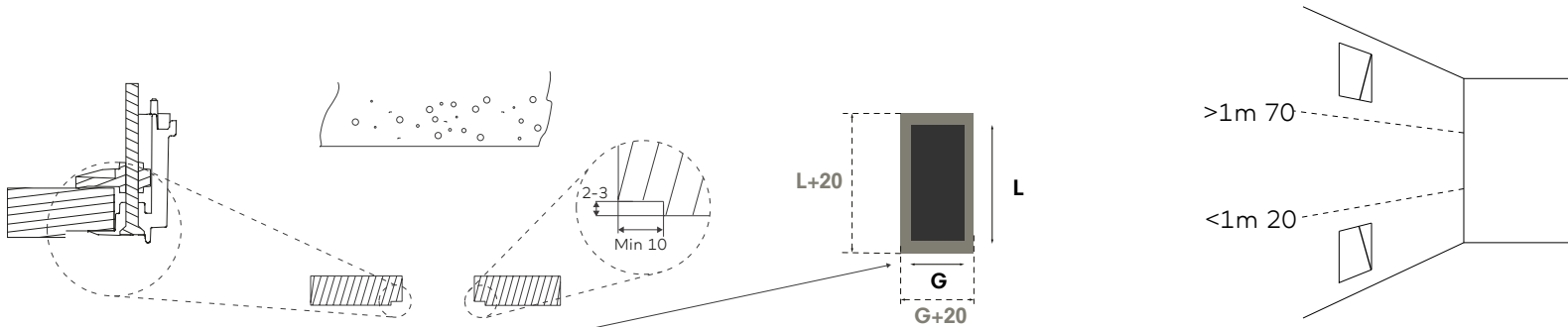
D= minimum installation depth
WxL= wall cutout for installation

GxHxI= minimum free volume space "behind" wall

In case of concrete wall, see installation manual KR8000002278 + KR8000002279
In case of brick wall, see installatin manual KR8000002279

3. installation

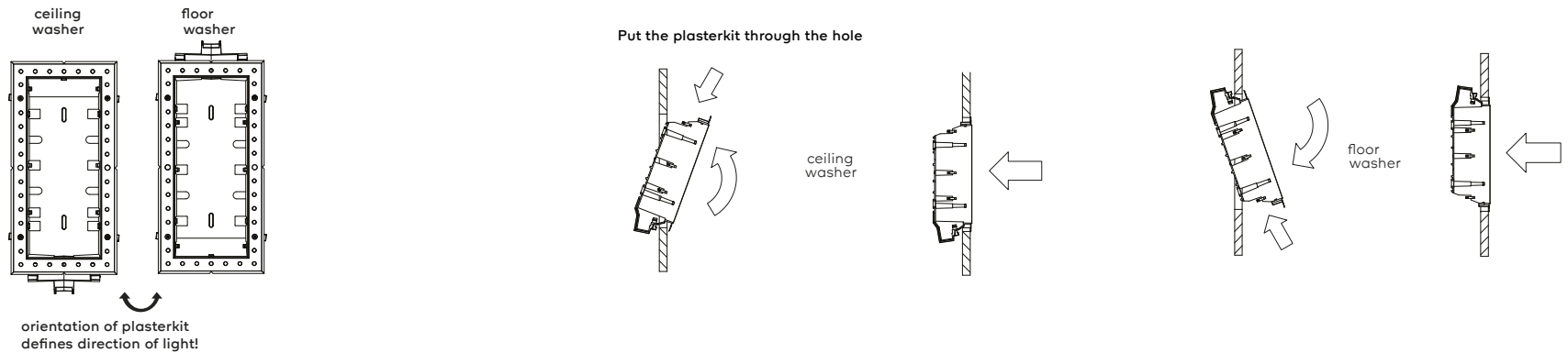
Optional



Optional: For sunken flange: Remove gypsum over the entire contour with a top and edge mill. Advantage: see line 6 sheet 2

kreon installation manual

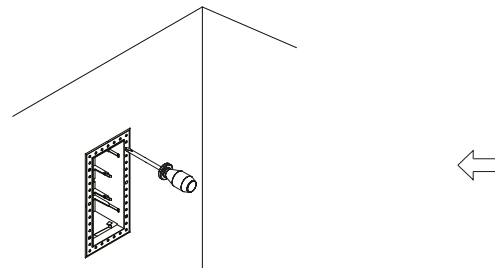
4. installation



5. installation

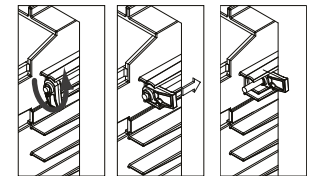
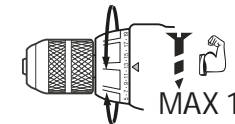
Please make sure that sticker is removed before proceeding!

Fix the plasterkit with the screws.



Assembling torque max 20 CN.m.

Assembling principle



6. installation

Fill around perimeter of plasterkit using suitable filler and plaster to hide screws and plasterkit.

