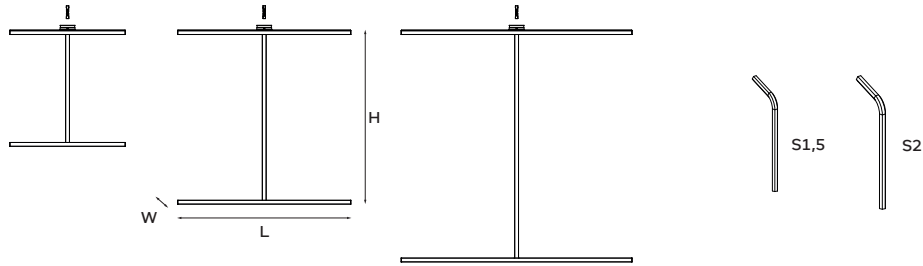


kreon installation manual

technics & dimensions



name	reference	current	wattage	C	AxB	LxWxH
fuga 600	KR974172-ZZZZ-YY-XX	500mA	6,4W	285	102x102	600x20xYY
fuga 900	KR974272-ZZZZ-YY-XX	500mA	9,5W	435	102x102	900x20xYY
fuga 1200	KR974372-ZZZZ-YY-XX	500mA	12,7W	435	102x102	1200x20xYY

IMPORTANT!

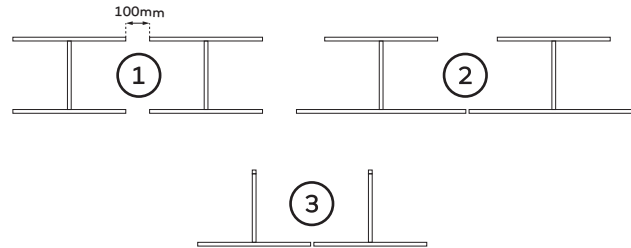
it is advised to only use metal anchor screws (M4, length depending on thickness drywall) instead of standard drywall plugs or universal plugs

Please make sure the main voltage is disconnected before proceeding!

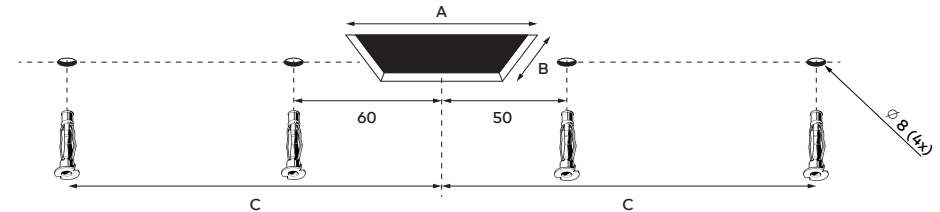


1. installation

BE AWARE: when multiple fuga fixtures are placed next to each other, make sure there is a minimum distance of 100mm between the ceiling profiles (1). you can also use ceiling profiles that are smaller than the LED (2), or install the ceiling profile perpendicular to the LED (3).

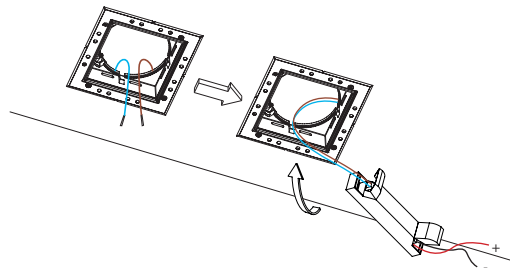


cut a square hole for the plasterkit and four round holes for the plugs, check the correct measurements for each fuga on the table above, install the plugs before proceeding

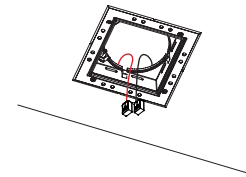


2. installation

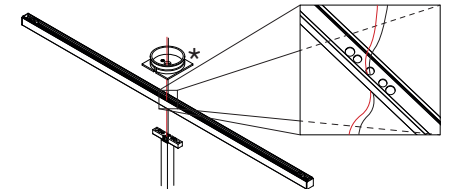
to install the down in-line 80 plasterkit see manual KR8170001758
install the correct gear with strain relief on the hollow ceiling



connect a connector to every cable of the driver



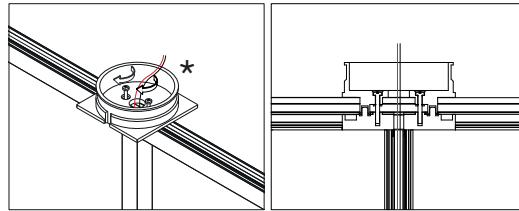
pull the LED cable through the ceiling profile and mounting plate



kreon installation manual

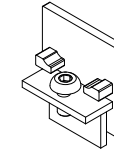
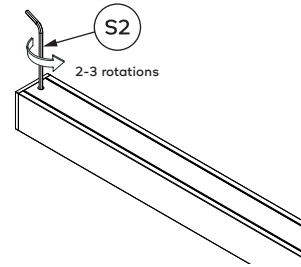
3. installation

assemble the parts together with the pre-mounted screws

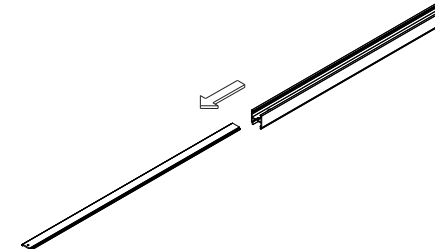


* kreon provides a black and white mounting plate, client can choose which he wants to install

remove the end-caps by turning the hexagon key 2-3 times, keep the screw inside the end-cap for easier installment later

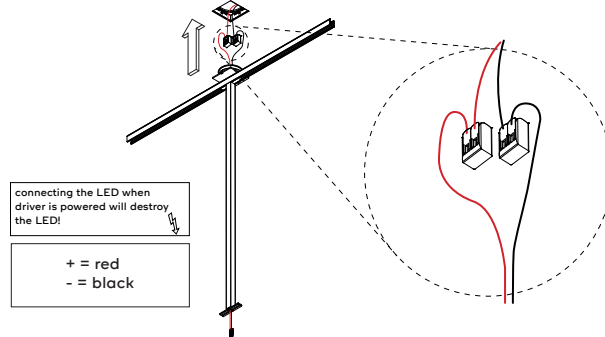


remove both cover profiles by sliding them out

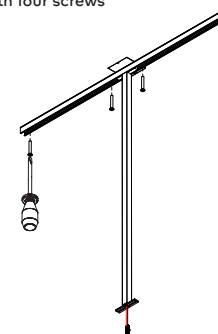


4. installation

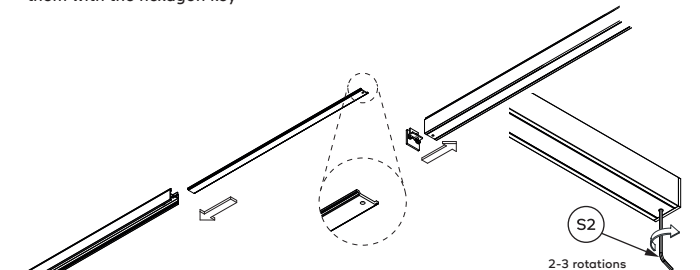
connect the power supply cables to the corresponding color and push the fuga in the plasterkit



fixate the ceiling profile with four screws

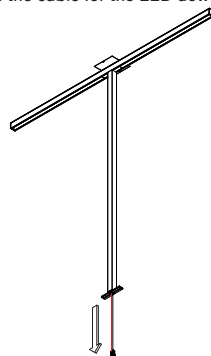


slide the covers back into place (make sure the hole is on the outside) then put the end-caps back and fixate them with the hexagon key

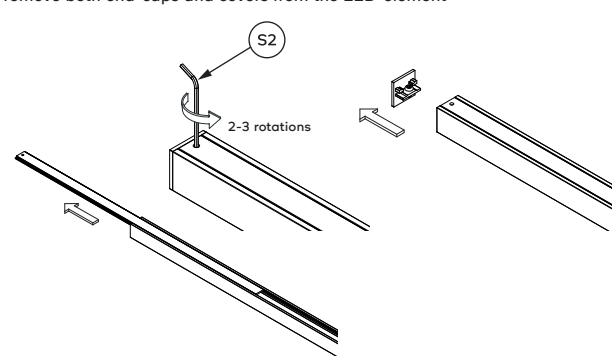


5. installation

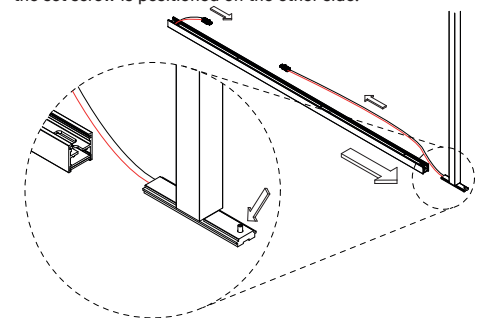
pull the cable for the LED down softly



remove both end-caps and covers from the LED-element



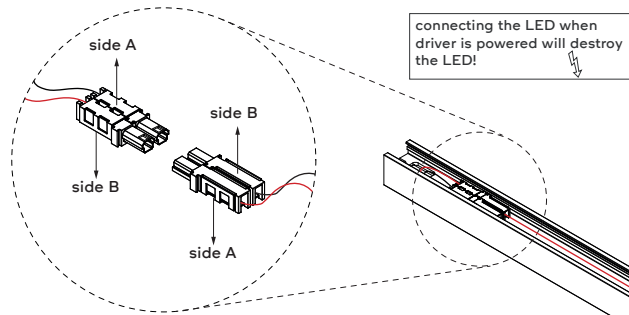
slide the LED-element on the vertical from the correct side! make sure the connectors are pointed towards each other and that the set screw is positioned on the other side!



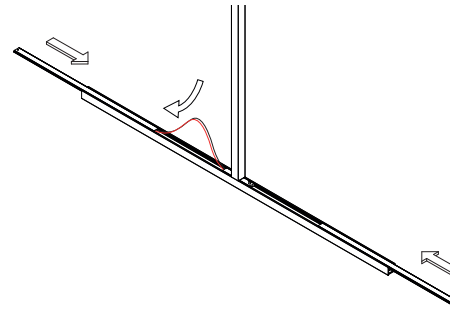
kreon installation manual

6. installation

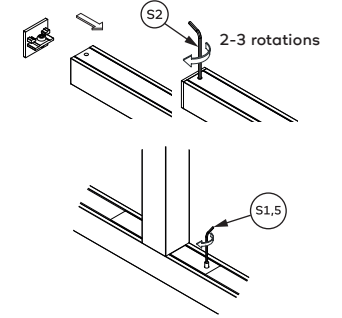
connect the wire to wire connectors, make sure the colors match (red-red, black-black) and that they are sided opposite of each other



slide the covers back into place, the cable must be tucked under the cover. (if you want the fuga asymmetrical, go to page 4)

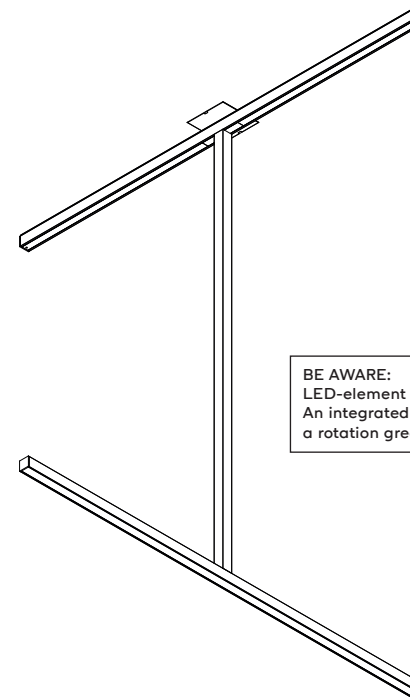
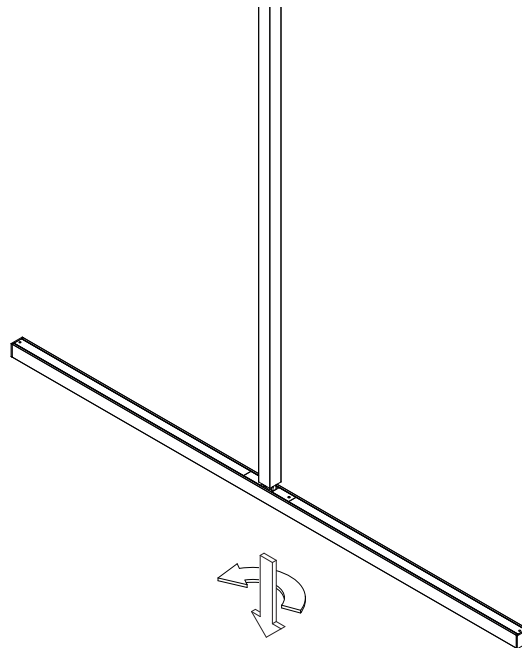


re-attach the end-caps and fixate the socket set screw inside the coupler mechanism



7. installation

the LED-element can be pulled down softly and rotated 90 degrees for a perpendicular set-up



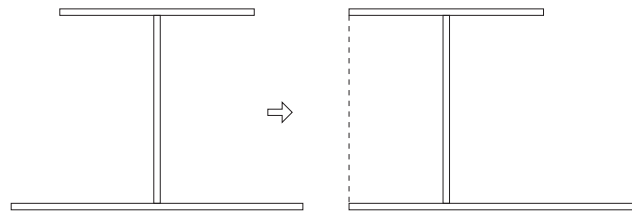
BE AWARE:
LED-element can only rotate 90°. An integrated stop will prevent a rotation greater than 90°.



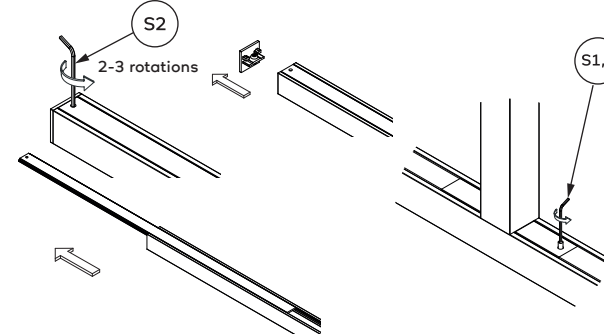
kreon installation manual

8. asymmetric mode

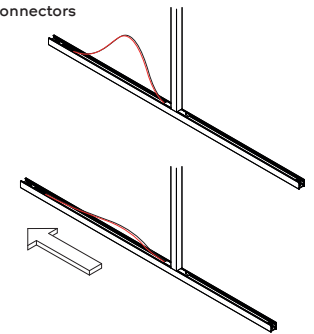
BE AWARE:
fuga can only be placed asymmetrical if
the ceiling profile is smaller than the LED



to place the LED asymmetrical to the vertical profile, first remove the end-caps and covers and unscrew the socket set screw in the coupler mechanism

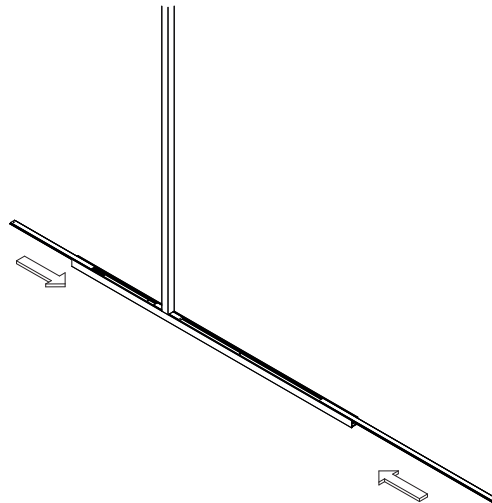


slide the LED asymmetrical. Make sure the
vertical profile slides away from the
connectors



9. asymmetric mode

slide the asymmetrical covers into place



re-attach the end-caps and fixate the socket set
screw inside the coupler mechanism

