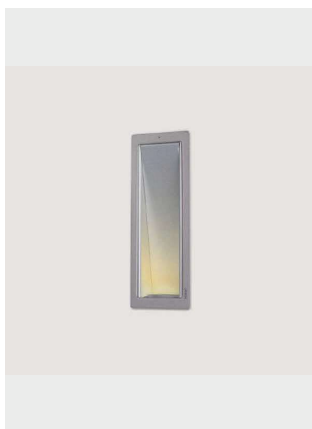


Date: _____ Customer: _____

Project: _____

Type: _____ Qty: _____



Side's concept is highly flexible and can be used as floor washlight, wallwasher or as an indirect light fitting. Placed at low heights, Side is a tool to illuminate circulation paths. Side can be installed on the ceiling and have a wallwash function. Moreover, Side can also be placed on the wall above the eye height and wallwash the ceiling, generating indirect ambient lighting. Installation boxes and plasterkits are available for the application of this product in various surfaces. The visible trim can be delivered in a silver or white finish powder coating.

Mini Side is a recessed fixtures for walls or ceilings. It can be installed in brickwork or cavity walls and requires only 80mm depth. Control gears, transformer or electronic components are mounted inside the housing. Reflector is included.

Construction

Luminaire

Made from sheet steel electrostatically treated and powder coated.

Finishes

- White (RAL 9016)
- Grey (RAL 9006)

Mounting Options

Recess mounting in drywall/ sheetrock, plaster, wood, concrete, or brick and mortar. Available with a flange or flangeless.

Classifications

- Ingress Protection – IP40

Electrical Characteristics

LED Specification

LED Life

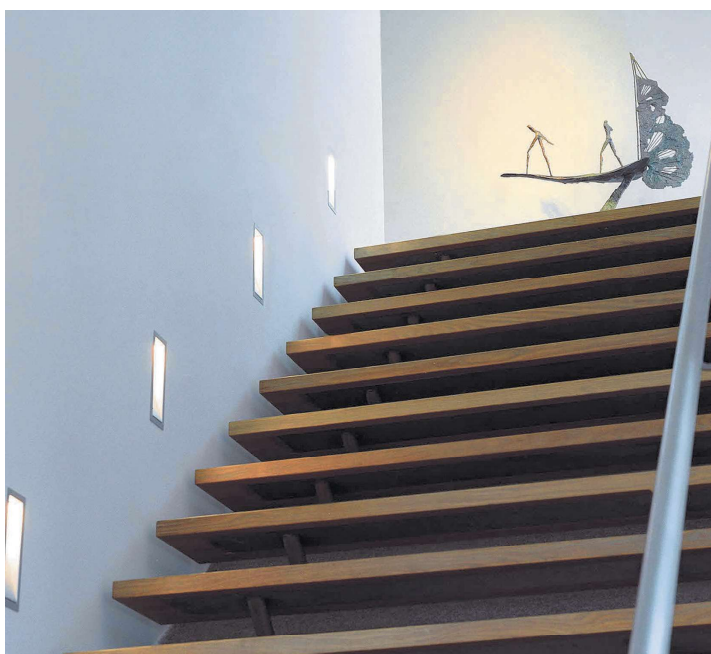
L80 greater than 50,000 hours.

Correlated Color Temperature (CCT)

- Available in 2700K or 3000K.
- CRI 80+

Gear

Standard 120V driver with on/off function (no dimming). Consult factory for TRIAC phase dim or 0-10V dim.



Ordering Codes

KU MS -	_____ -	IN -	QT9-AX -	80 -	GRY -
KREON MINI SIDE	INSTALLATION MATERIAL	INSTALL LOCATION	LIGHT SOURCE AND CCT	CRI	FINISH COLOR OF FLANGE*
MS – Mini Side, Rectangular aperture with flange MSIL – Mini Side In-Line, Rectangular trimless/ flangeless installation	DW – Drywall/sheetrock (or plaster) WO – Wood CB – Concrete or Brick and Mortar (requires Installation box)	IN – Indoor OUT – Outdoor (only oriented for floorwash), IP55 (Outdoor version not available with Mini Side In-Line)	27 – 2700K 30 – 3000K (consult factory for other options) QT9-AX - BI-PIN SOCKET FOR USE WITH 20W LAMP**	80 – 80+ min CRI	WHT – White GRY – Grey NA – (for in-line versions) SS – Stainless Steel (only available with outdoor version)

Ordering Example: **KUMS-DW-IN-30-80-WHT**

*Consult factory for custom RAL finish color options for flange. Reflector is always matte silver/gray. ** Lamps supplied by others.

KREON STOCK PROGRAM:

ONLY SPECIFICATIONS SHOWN IN BLACK ARE AVAILABLE FOR THE STOCK PROGRAM. GREYED OUT SPECIFICATIONS MAY BE AVAILABLE BUT WOULD BE SUBJECT TO STANDARD LEAD TIMES. PLEASE CONTACT FACTORY.

Photometry — For full photometry, please reference IES files on www.kreon.com

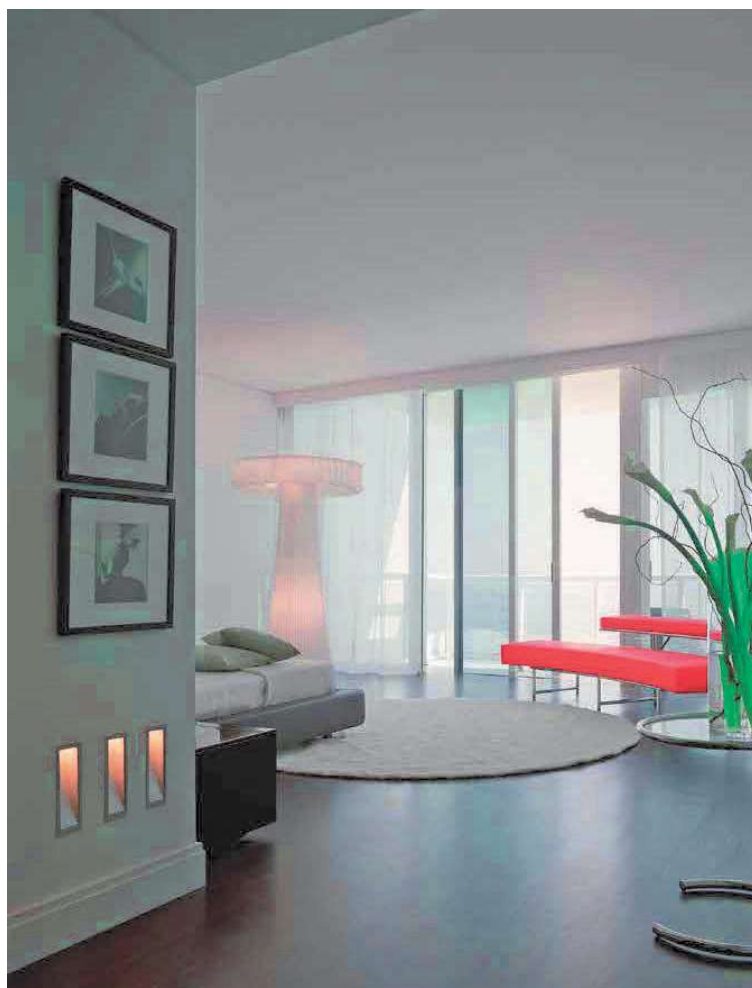
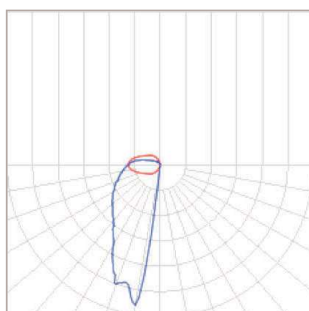
KUMS-DW-IN-30-80-WHT
(no accessories)

Light engine: 445 lumens

CCT: 3000K

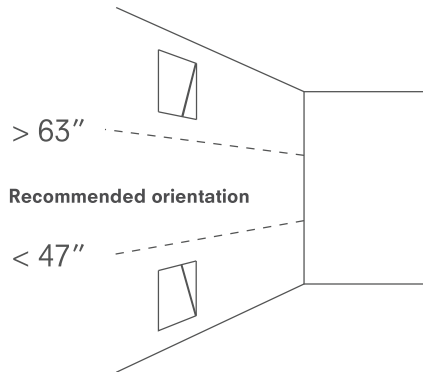
Power: 2.3W

Luminaire output:
147 lumens (64 lm/W)



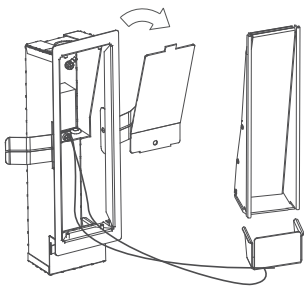
Mini Side luminaires are ETL listed for dry and damp locations.
Mini Side luminaires lend support for LEED credits and certification.

Mounting/Installation

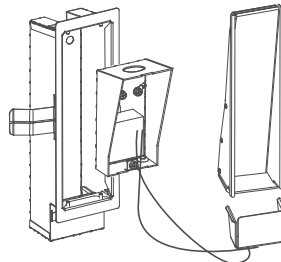


Kreon recommends to install the luminaire as follows:

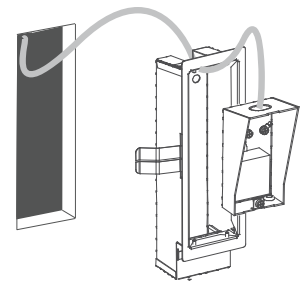
- Install Side higher than 63" for uplight.
- Install Side lower than 47" for downlight.
- Thickness of boardmaterial: 1/3" - 4/5"



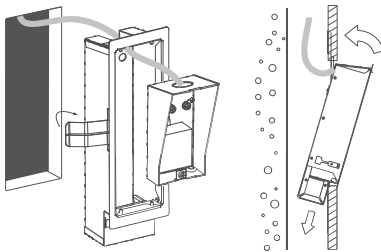
1. Take out the reflector and remove the cover of the junction-box



2. Unscrew the black screw in the j-box carefully take out the box without pulling



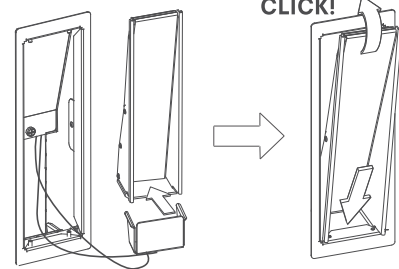
3. Lead supply wire in luminaire, remove the knock-out and make connection



4. Fold the springs and place the luminaire in the wall

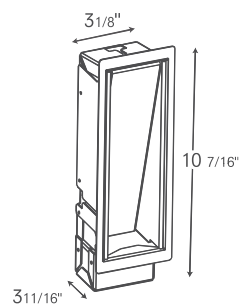


5. Replace the j-box in the luminaire and close the j-box with the cover

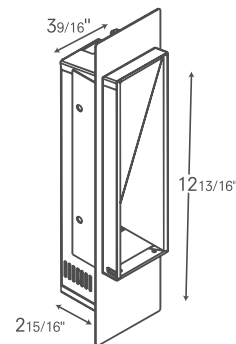


6. Insert the reflector, underside first

Dimensions



Mini Side (MS)



Mini Side In-Line (MSIL)



Mini Side luminaires are ETL listed for dry and damp locations.
Mini Side luminaires lend support for LEED credits and certification.

KREON STOCK PROGRAM:

ONLY SPECIFICATIONS SHOWN IN BLACK ARE AVAILABLE FOR THE STOCK PROGRAM.

GREYED OUT SPECIFICATIONS MAY BE AVAILABLE BUT WOULD BE SUBJECT TO STANDARD LEAD TIMES. PLEASE CONTACT FACTORY.