

## Technics

top

side

iso

Name

Reference

A

B

Audio In-line 80

KR90709x

77

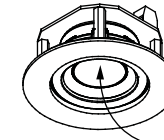
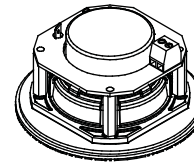
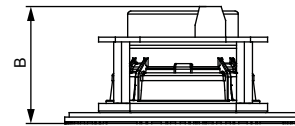
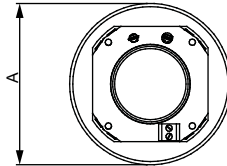
39

Audio in-line 120

KR90789x

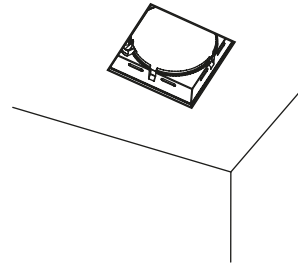
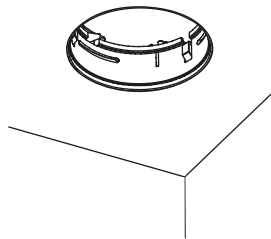
116

69



Do not push membrane

## 1 Dimensions

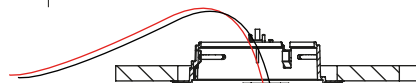


Install plasterkit as shown in corresponding installation manual

- size 80 Aplis (round): KR8170001755
- size 80 Down (square): KR8170001758
- size 120 Aplis (round): KR8170001755
- size 120 Down (square): KR8070002005

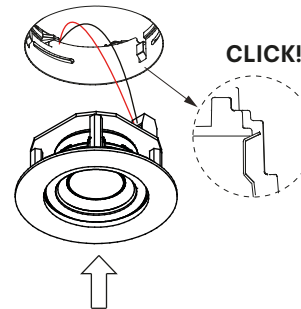
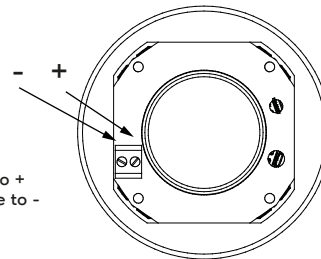
Please make sure the main voltage is disconnected before proceeding! ⚡

## 2 Installation



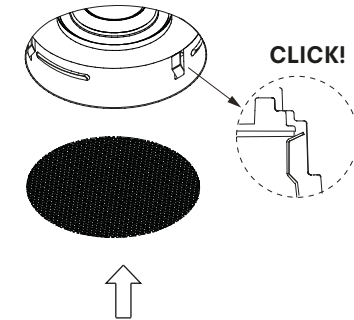
Screw connector

Connect red audio cable to +  
Connect black audio cable to -



CLICK!

Push in module untill 3x CLICK for round  
Push in module untill 4x CLICK for square

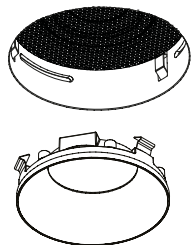


CLICK!

Push in mesh cover untill 3x CLICK for round  
Push in mesh cover untill 4x CLICK for square

Please make sure the 3/4 springs are keeping module and mesh cover in place. If needed use flat screwdriver to pull springs in place.





Install louvre as shown in corresponding installation manual  
- size 80/120 Aplis (round): KR8170001761  
- size 80/120 Down (square): KR8170001762

## 3 Installation



## 4 pictures