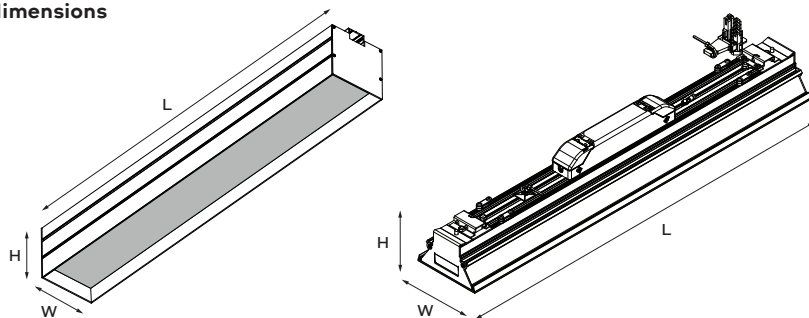


kreon installation manual

technics & dimensions



name	reference	voltage	LxWxH
cana 80 recessed profile	CANA08xxxxxx	230V	Lx102x140
ligna 80 in-cana	KR934910-xxxx-xx	230V	Lx95x85

Please make sure the main voltage is disconnected before proceeding! ⚡

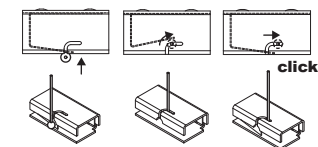
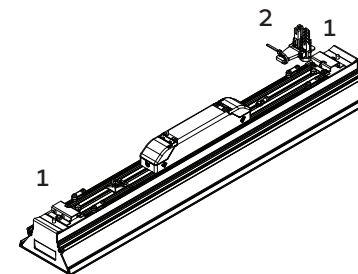
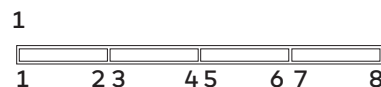
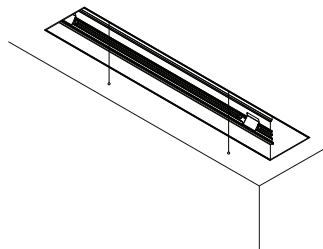
1. installation

To install main profile, see installation manual KR8050202150

Arrange the modules on a flat, clean table. Modules are labeled 1 2, 3 4, 5 6, 7 8.... Nr.1 inside the main profile indicates where to start.

1: add safety cables 2: connect module connector to flat cable

1: Add cable to fall safety at both ends for each module.



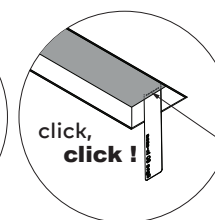
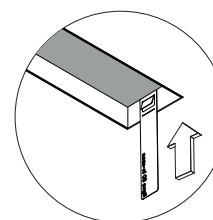
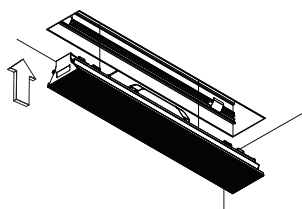
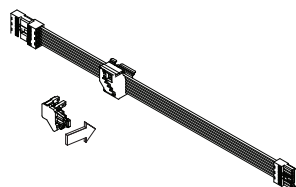
2. installation

2: Connect connector to flat cable

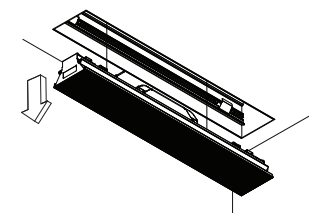
Click the modules in the main profile

use the removal tool to remove the ligna module. Slide the removal tool in between the end of the profile and the ligna until it clicks two times!

pull the module down



push until this line is not visible anymore



kreon light source information

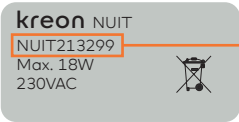
In order to check the Energy Efficiency Class of the LED in this custom profile, enter the reference on the aluminum label in the profile into the Kreon Eprel search engine. This will generate a link to the correct page in the EPREL-database.

<https://www.kreon.com/en/international/eprel>

or
use the QR-code below



example



kreon

home / eprel search

Epel search

NUIT213299 Submit

Search results

NUIT213299

EPREL - European Product Registry for Energy Labelling

Home > Light sources > 999827

Light sources
REGULATION (EU) 2019/2015 with regard to energy labelling of light sources

The supplier of this model has not completed the verification process yet. Click here for more

Rena Electronics B.V.
900D1001.328-2700K

General information	
TYPE OF LIGHT SOURCE	
Lighting technology used	LED
Non-directional or directional	Non-directional
Light source cap-type (or other electric interface)	PCB with connector
Main or non-main	Non-main
Connected light source (CLS)	No
Colour tunable light source	No
High luminance light source	Yes
Anti-glare shield	No
Dimmable	Yes

ENERGY LABEL

35 kWh/1000h