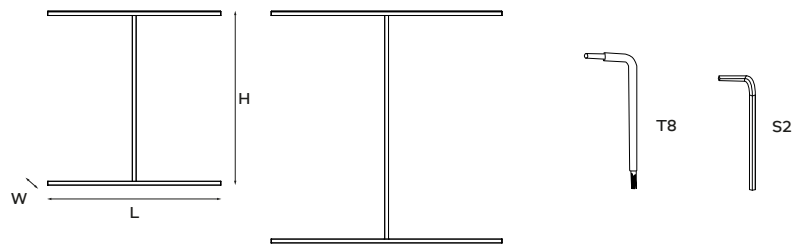


# kreon installation manual

## technics & dimensions



name	reference	voltage	wattage	B	C	LxWxH
fuga 900	KR974262-ZZZZ-YY-XX	230V	9,5W	50	435	900x20xYY
fuga 1200	KR974362-ZZZZ-YY-XX	230V	12,7W	50	435	1200x20xYY

### IMPORTANT!

it is advised to only use metal anchor screws (M4, length depending on thickness drywall) instead of standard drywall plugs or universal plugs

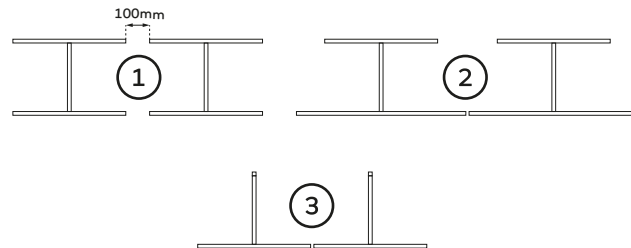


Please make sure the main voltage is disconnected before proceeding!

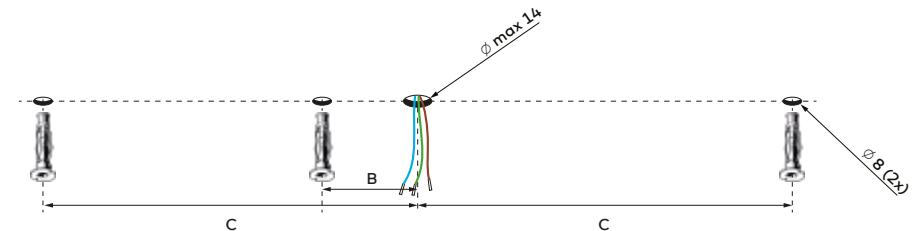


## 1. installation

**BE AWARE:** when multiple fuga fixtures are placed next to each other, make sure there is a minimum distance of 100mm between the ceiling profiles (1). you can also use ceiling profiles that are smaller than the LED (2), or install the ceiling profile perpendicular to the LED (3).

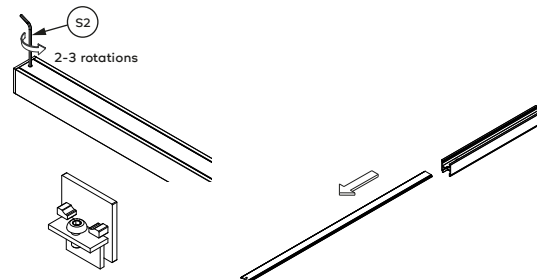


Drill round holes for the anchor screws and power supply cables, check the correct measurements on the table above, install the anchor screws before proceeding

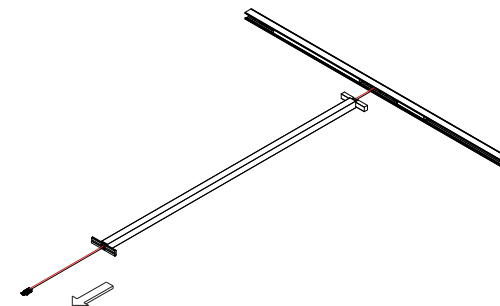


## 2. installation

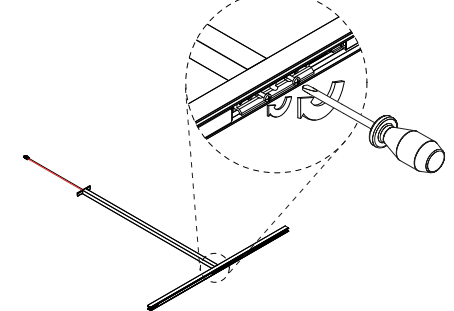
Remove the end-caps from the ceiling profile (profile without LED) by turning the hexagon key 2-3 times, keep the screw inside the end-cap for easier installment later and remove both cover profiles by sliding them out



Pre-assemble the vertical profile and ceiling profile on a flat, clean table simultaneously pull the LED cable through the coupler

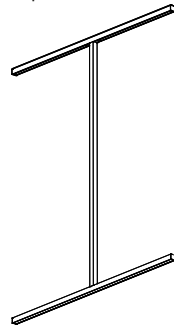


Screws for connecting the vertical profile to the ceiling profile are already pre-assembled on the ceiling profile

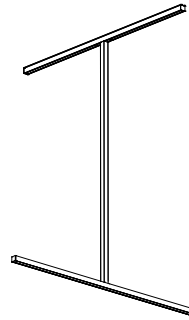


# kreon installation manual

You need to decide the direction of the led element  
1. standard set-up, in-line with the ceiling profile, go to step 4

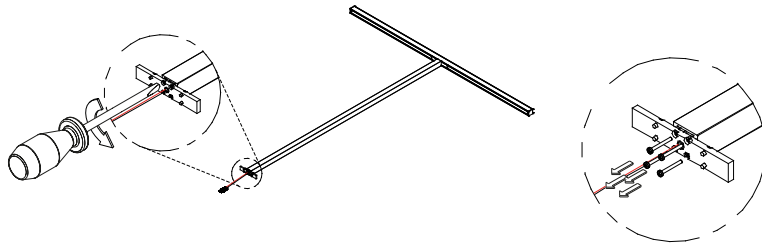


2. in a perpendicular set-up, follow next steps

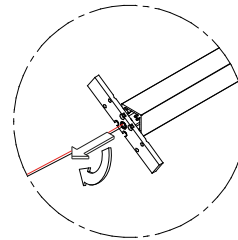


## 3. perpendicular set-up

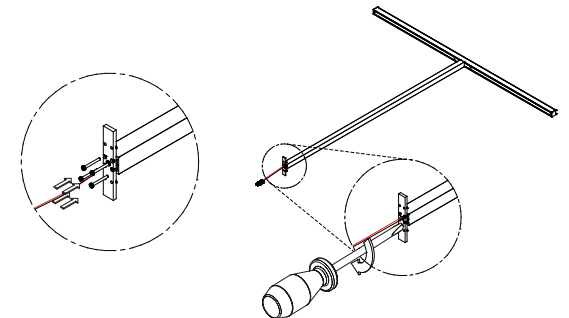
Unscrew the 4 screws at the bottom of the coupler and remove them (keep screws for later step)



Pull inner part out and turn it 90°

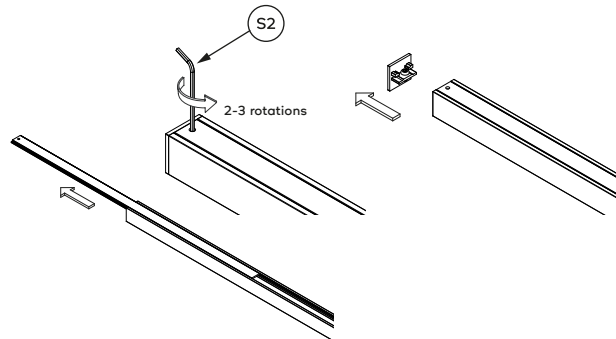


Use the 4 screws and screwdriver to tighten the inner part

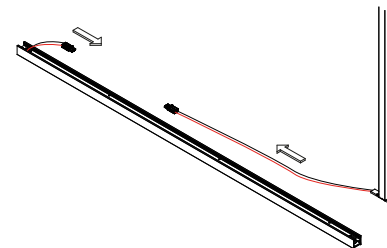


## 4. installation

Remove both end-caps and covers from the LED-element



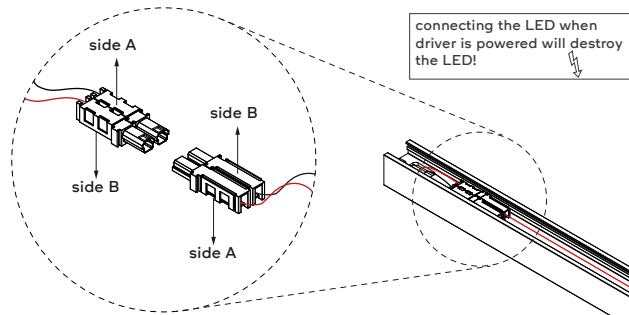
Make sure the connectors are pointed towards each other.



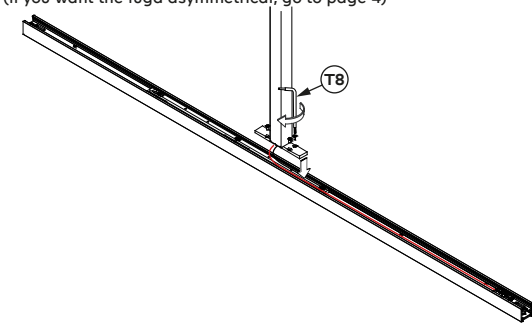
# kreon installation manual

## 5. installation

Connect the wire to wire connectors , make sure the colors match (red-red, black-black) and that they are placed opposite of each other

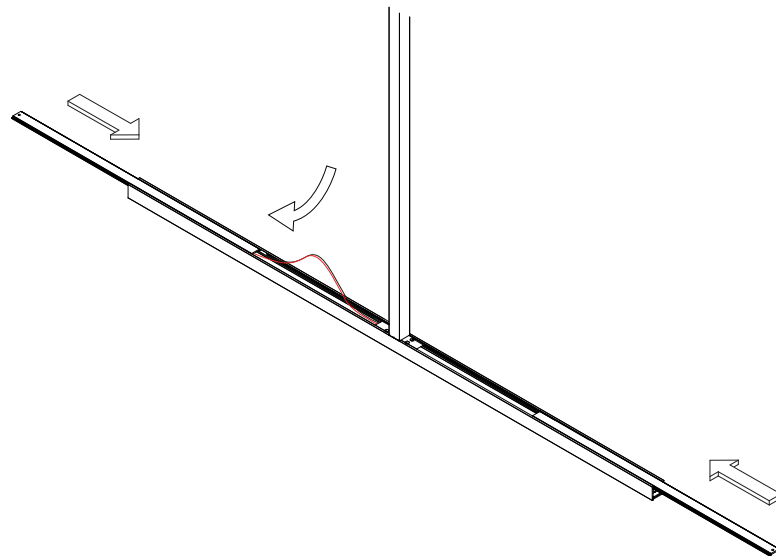


Use the 4 screws provided to attach the LED element to the coupler (if you want the fuga asymmetrical, go to page 4)

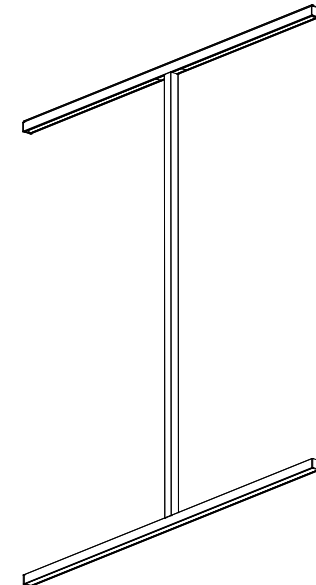
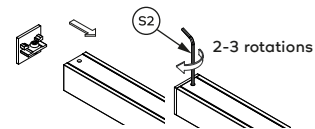


## 6. installation

Slide the covers back into place, the cable must be tucked under the cover.



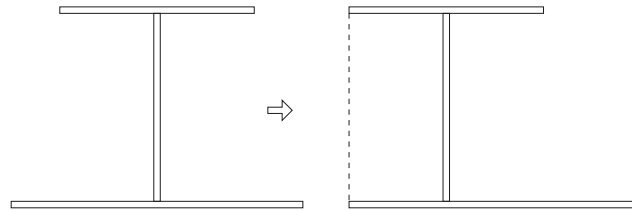
Re-attach the end-caps



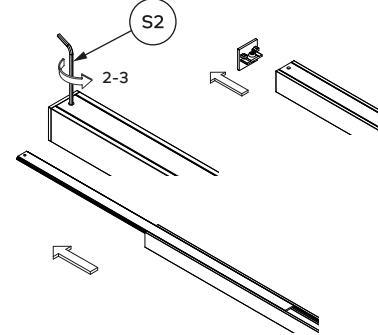
# kreon installation manual

## 7. asymmetrical mode

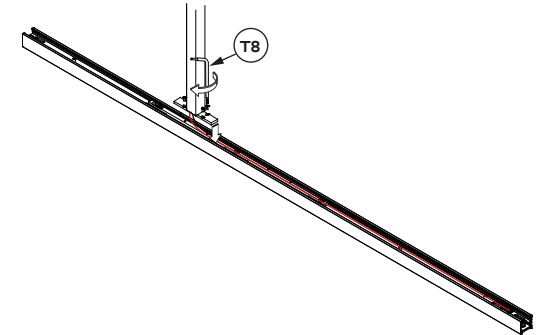
**BE AWARE:**  
Fuga can only be placed asymmetrical if the ceiling profile is smaller than the LED



To place the LED asymmetric to the vertical profile, first remove the end-caps

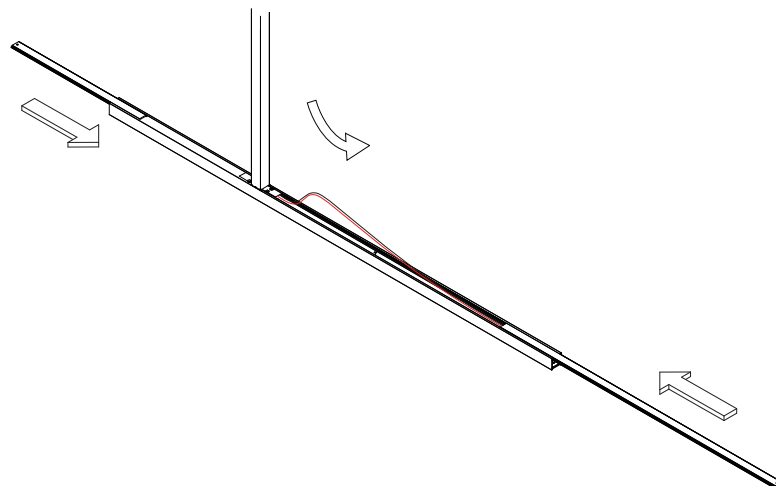


Use the 4 screws provided to attach the LED element to the coupler

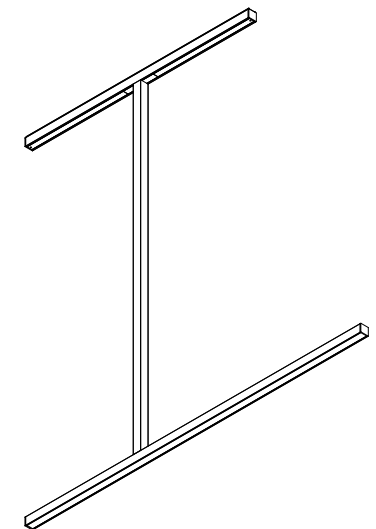
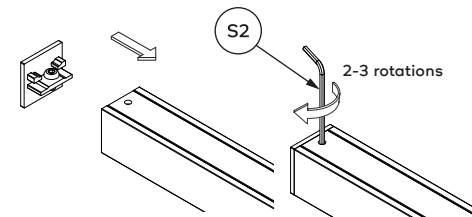


## 8. asymmetrical mode

Make sure the vertical profile slides away from the connectors  
Slide the asymmetrical covers into place



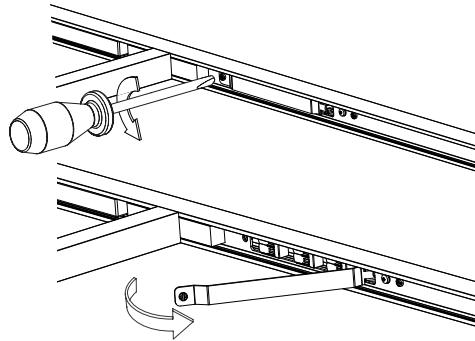
Re-attach the end-caps



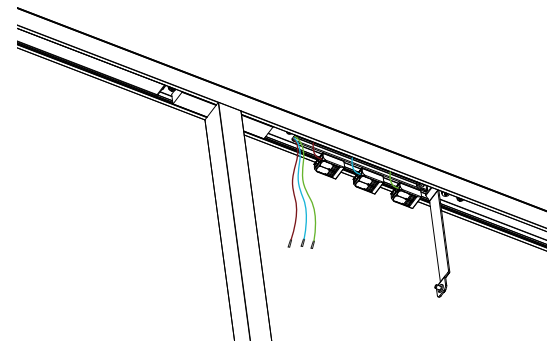
# kreon installation manual

## 9. asymmetric mode

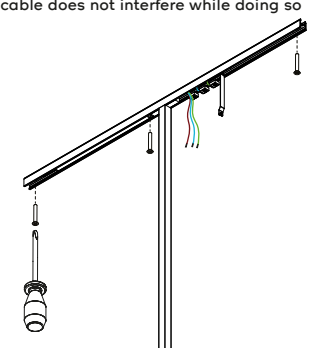
Unscrew the connector cover and open it



Pull the power supply cables through the opening

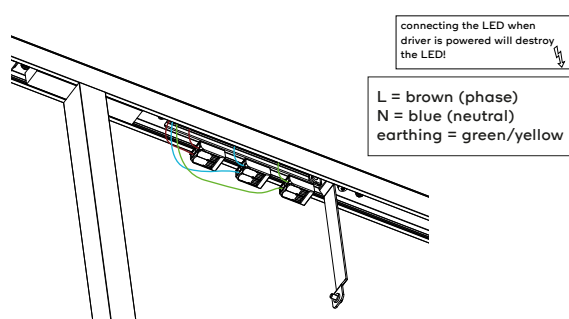


Fixate the ceiling profile with three screws, make sure the cable does not interfere while doing so

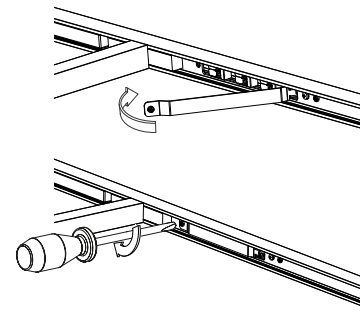


## 10. asymmetric mode

Connect the power supply cables to the corresponding color



Close the connector cover



Slide the covers back into place (make sure the hole is on the outside) then put the end-caps back and fixate them with the hexagon key

